

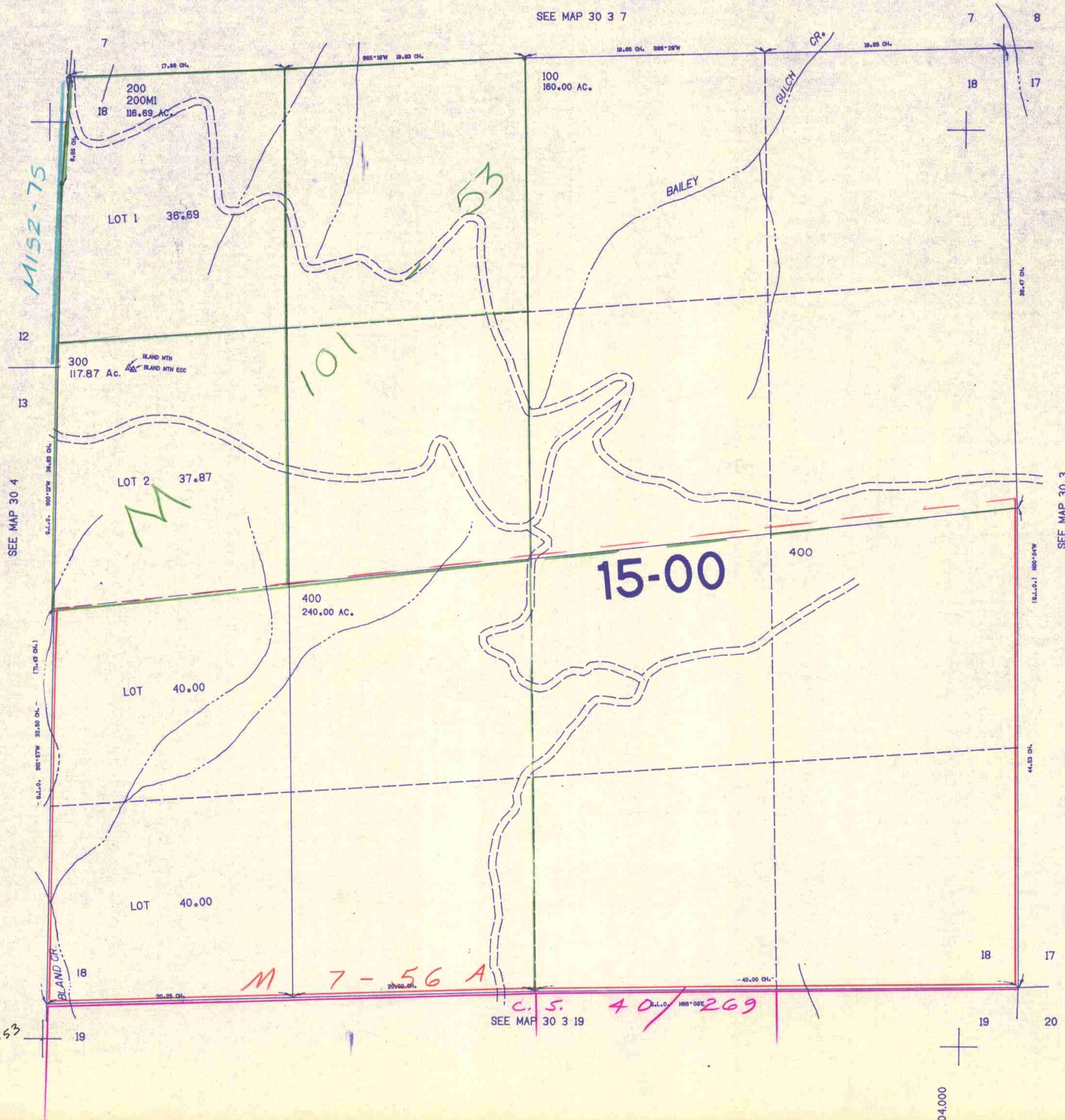
SECTION 18 T.30S. R.3W. W.M.
DOUGLAS COUNTY

30 3 18

THIS MAP WAS PREPARED FOR
ASSESSMENT PURPOSE ONLY.

1"=400'

SEE MAP 30 3 7



M101-53

SEE MAP 30 3 19

C.S. 40/269

482.000

1304.000

30 3 18

8/84 BS