

SECTION 34 T.30S. R.2W. W.M.
DOUGLAS COUNTY

30 2 34

1" = 400'

SEE MAP 30 2 27

M 65 - 78

28 27 26

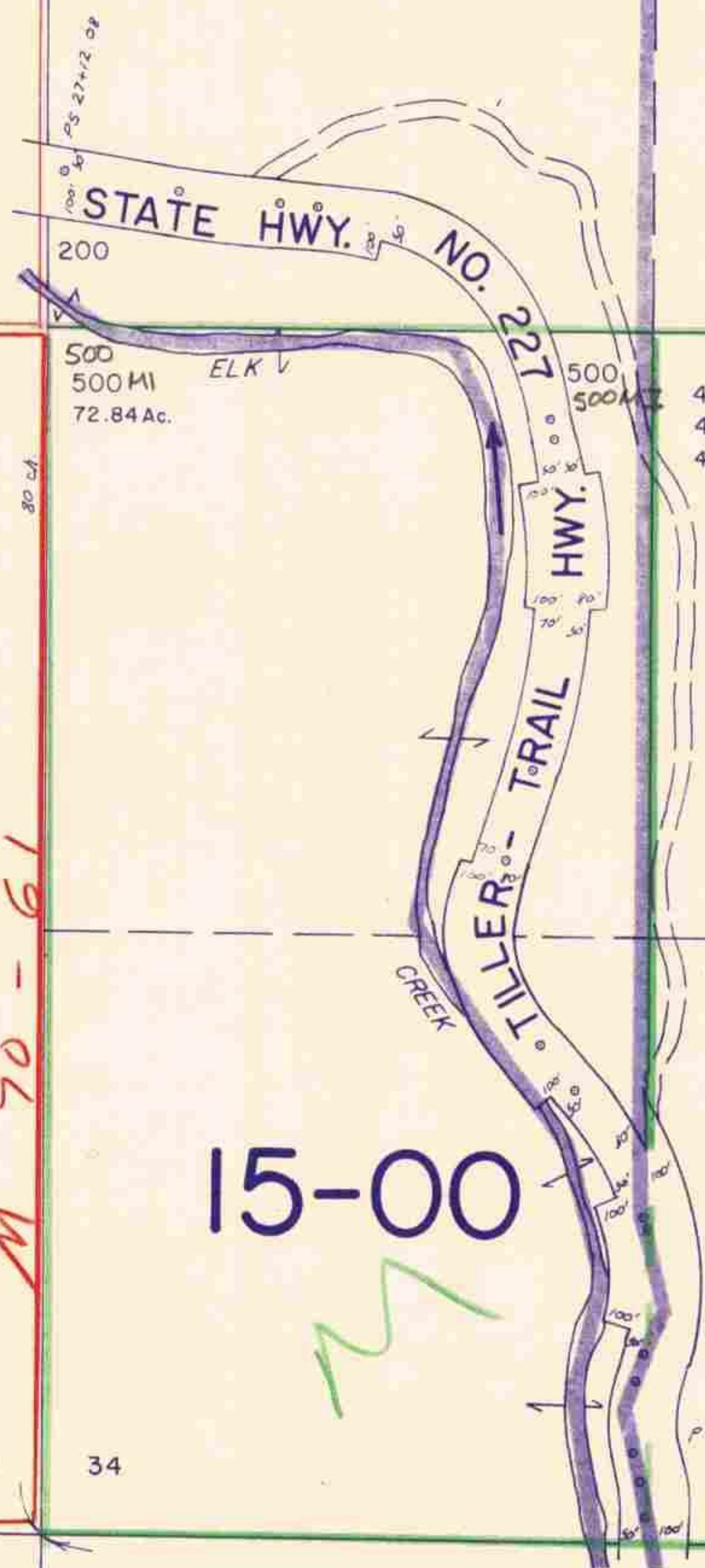
33 34 34 35

15-03

SEE MAP 30 2 33A
R.M. 1 - 62

15-00

69



SEE MAP 30 2 33
M 70 - 61

15-00

M 65 - 56
SEE MAP 30 2

33 34 34 35

4 3 CS 65/90-35 465,000

M 65 - 69

SEE MAP 31 2 3

1,351,000

30 2 34

8/84 BD