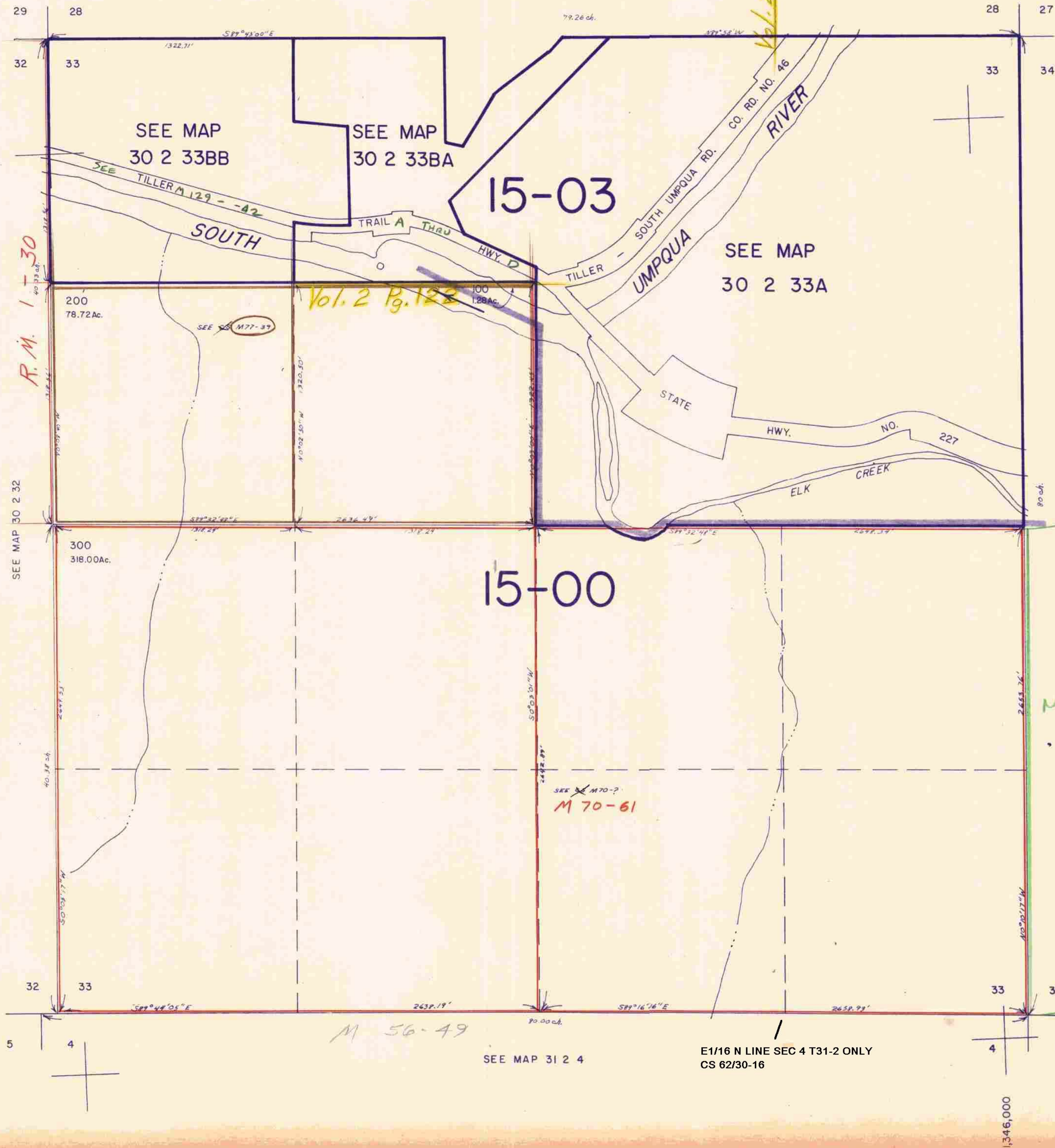


SECTION 33 T.30S. R.2W. W.M.  
DOUGLAS COUNTY

30 2 33  
& INDEX

1" = 400'

SEE MAP 30 2 28



SEE MAP 31 2 4

E1/16 N LINE SEC 4 T31-2 ONLY  
CS 62/30-16

465,000

30 2 33  
& INDEX

8/84 *ps*