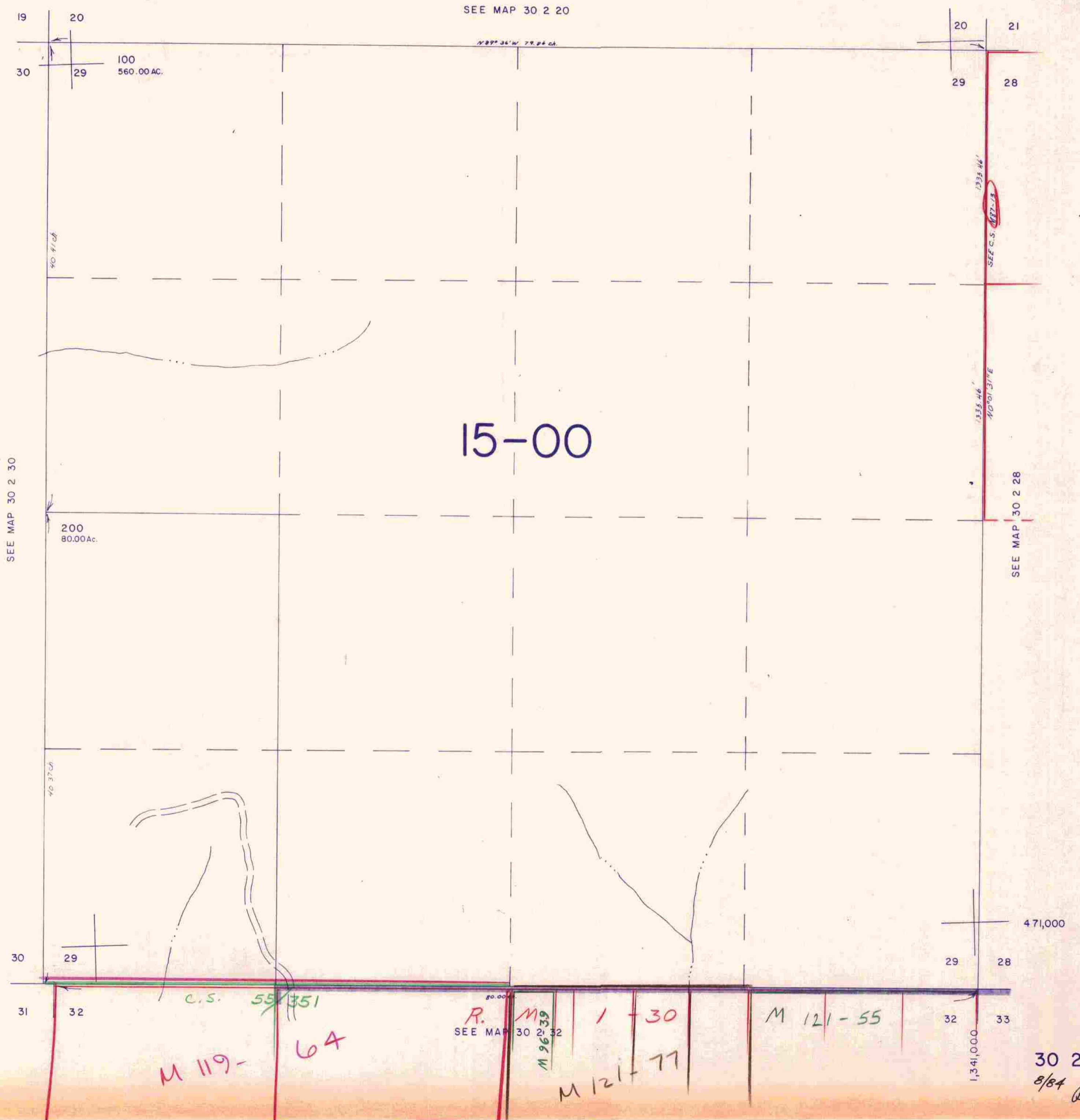


SECTION 29 T.30S. R.2W. W.M.  
DOUGLAS COUNTY

30 2 29

1" = 400'



SEE MAP 30 2 20

19 20  
30 29

100  
560.00 AC.

20 21  
29 28

15-00

SEE MAP 30 2 30

200  
80.00 Ac.

SEE MAP 30 2 28

30 29  
31 32

c.s. 55/351

R. M  
SEE MAP 30 2 32

1-30

M 121-55

471,000  
29 28

M 119-64

M 96-39

M 121-77

1,341,000  
32 33

30 2 29  
8/84 B2