

THIS MAP WAS PREPARED FOR ASSESSMENT PURPOSE ONLY

NW1/4 SW1/4 SEC. 23 T.30S. R.2 W. W.M. DOUGLAS COUNTY

REVISED ON 1-22-02

30 2 23CB

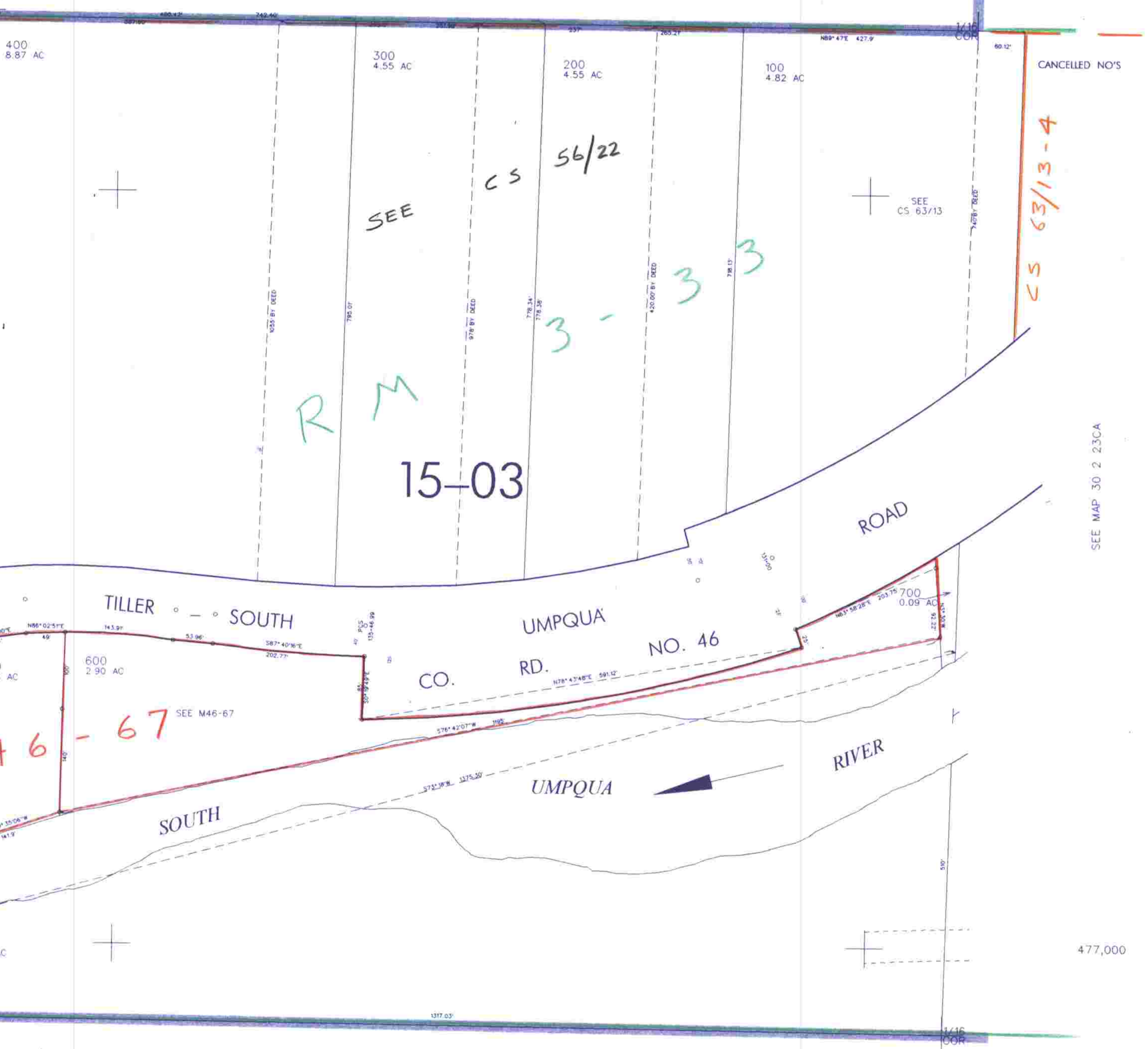
1"=100'

SEE MAP 30 2 23

1/4 COR

(OLD 1/4 COR. DESTROYED)

M 46-67



CANCELLED NO'S

CS 63/13-4

15-03

SEE MAP 30 2 22

SEE MAP 30 2 23CA

M

46-67

SEE M46-67

477,000

SEE MAP 30 2 23

4,274,000

30 2 23CB ^{nr}
10/02 JP