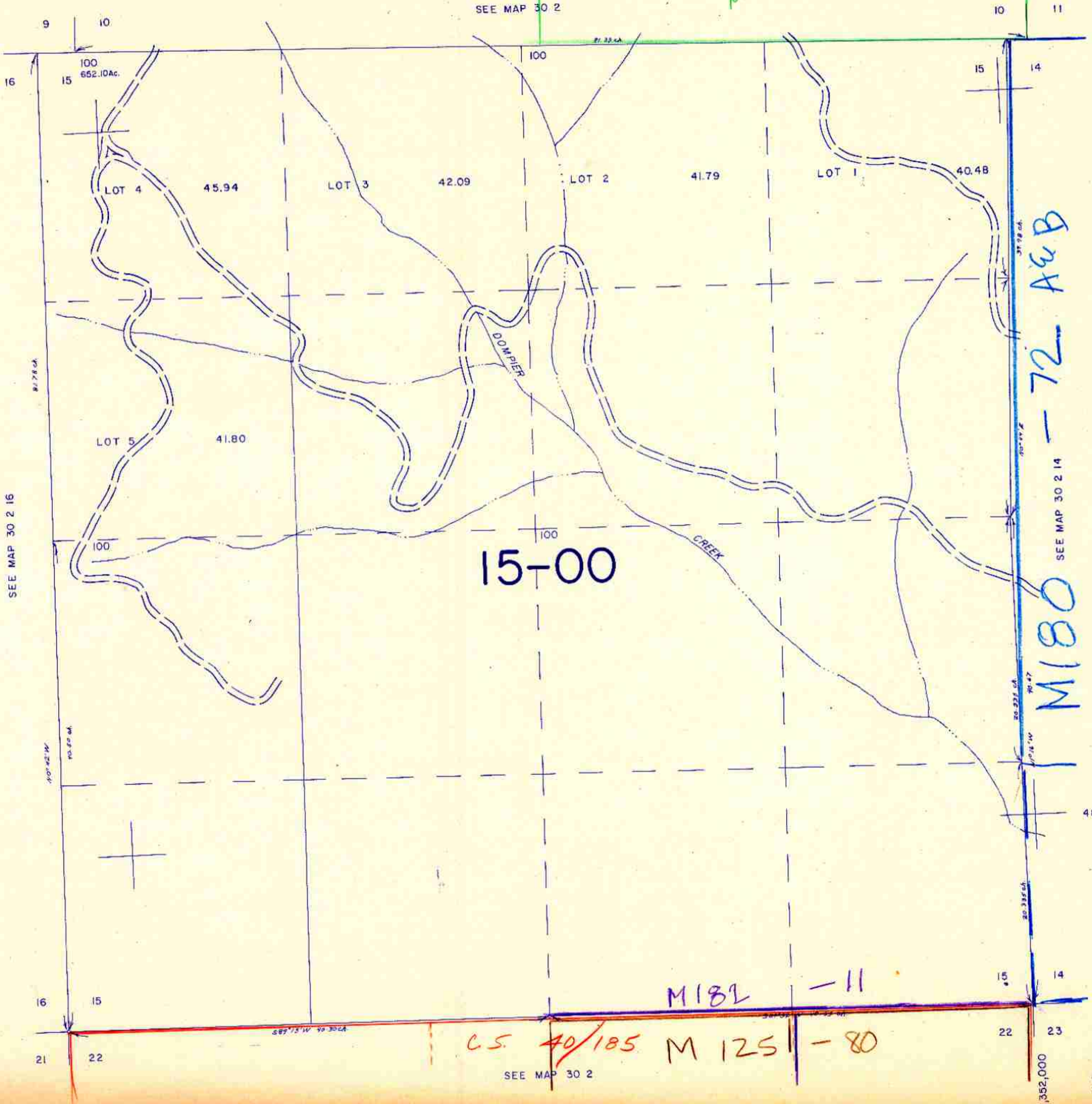


SECTION 15 T.30S. R.2W. W.M.
DOUGLAS COUNTY

30 2 15

1" = 400'

M162-29



SEE MAP 30 2 16

SEE MAP 30 2

SEE MAP 30 2 14

15-00

M182 - 11

C.S. 40/185 M 125 - 80

M180

72 A & B

482,000

30 2 15

8/84 BS

1,352,000