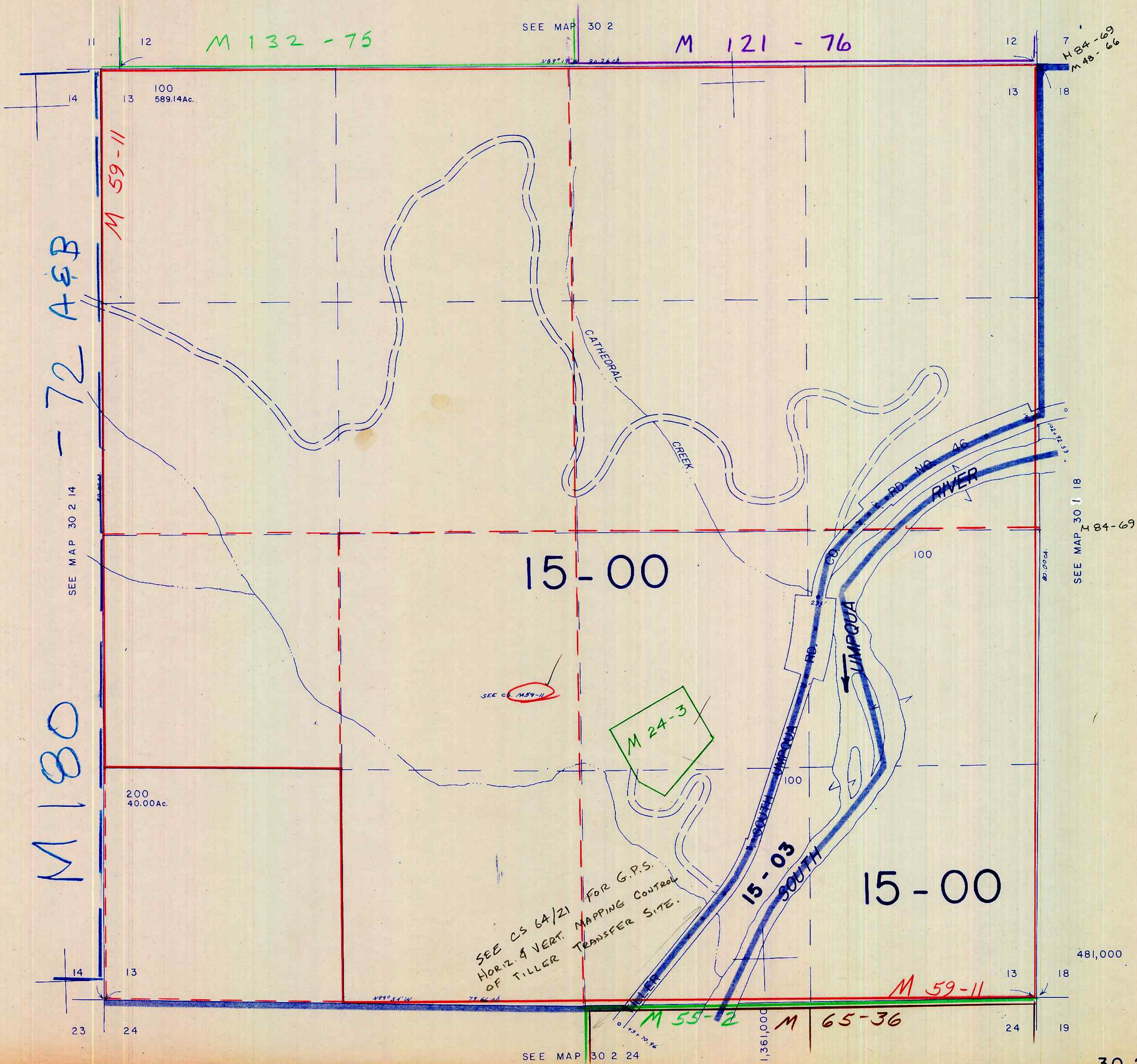


SECTION 13 T.30S. R.2W. W.M.
DOUGLAS COUNTY

1" = 400'



SEE CS 64/21 FOR G.P.S.
HORIZ. & VERT. MAPPING CONTROL
OF TILLER TRANSFER SITE.

M 84-69
M 48-66

SEE MAP 30 2 18
M 84-69

481,000

SEE MAP 30 2 19