

THIS MAP WAS PREPARED FOR
ASSESSMENT PURPOSE ONLY

SEC. 7 T.30S. R. 2W W.M.
DOUGLAS COUNTY

1" = 400'

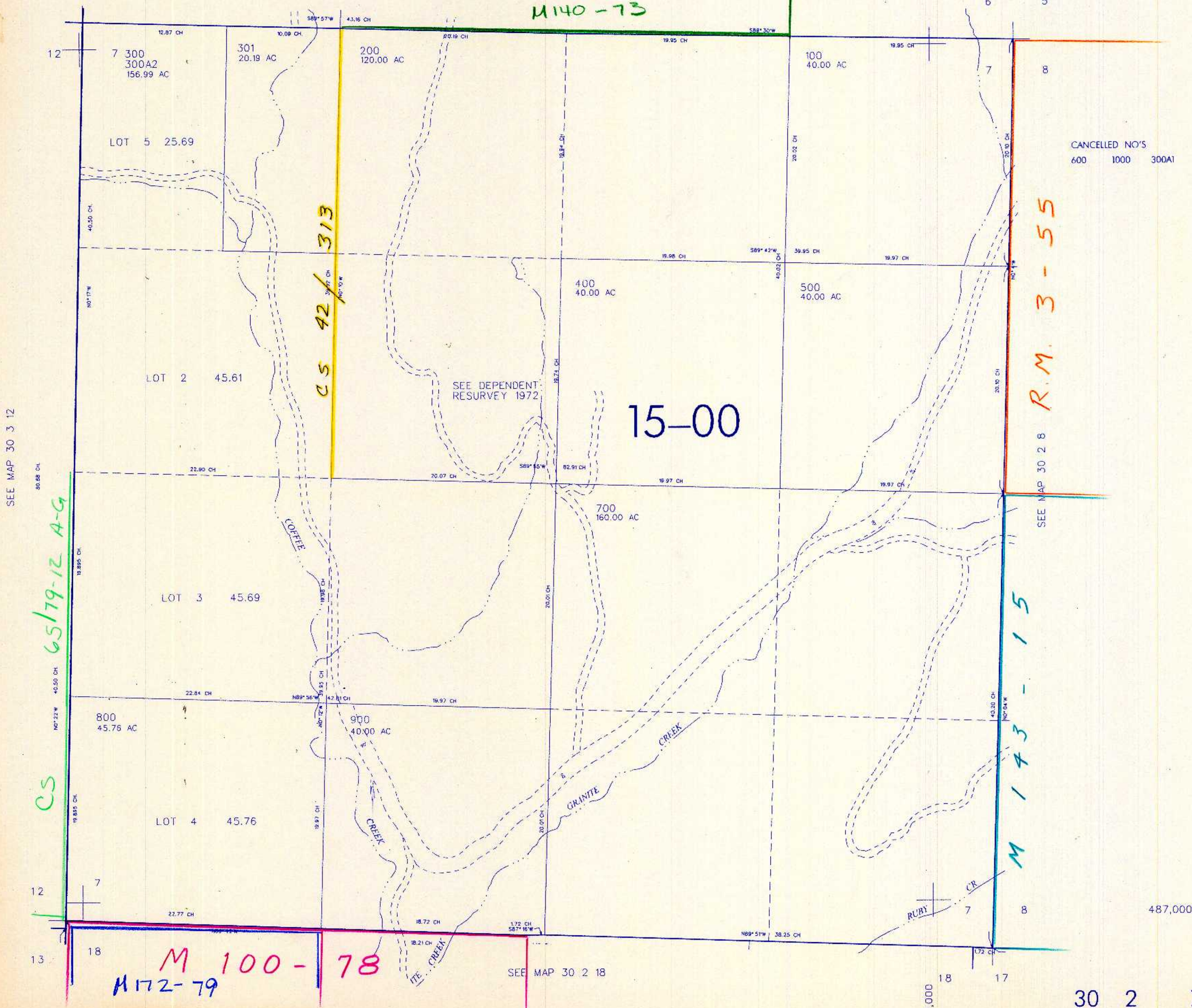
REVISED ON
9-4-02

30 2 7

SEE MAP 30 2 00

M 1140-73

CANCELLED NO'S
600 1000 300A1



487,000

30 2 7

9/02 JP