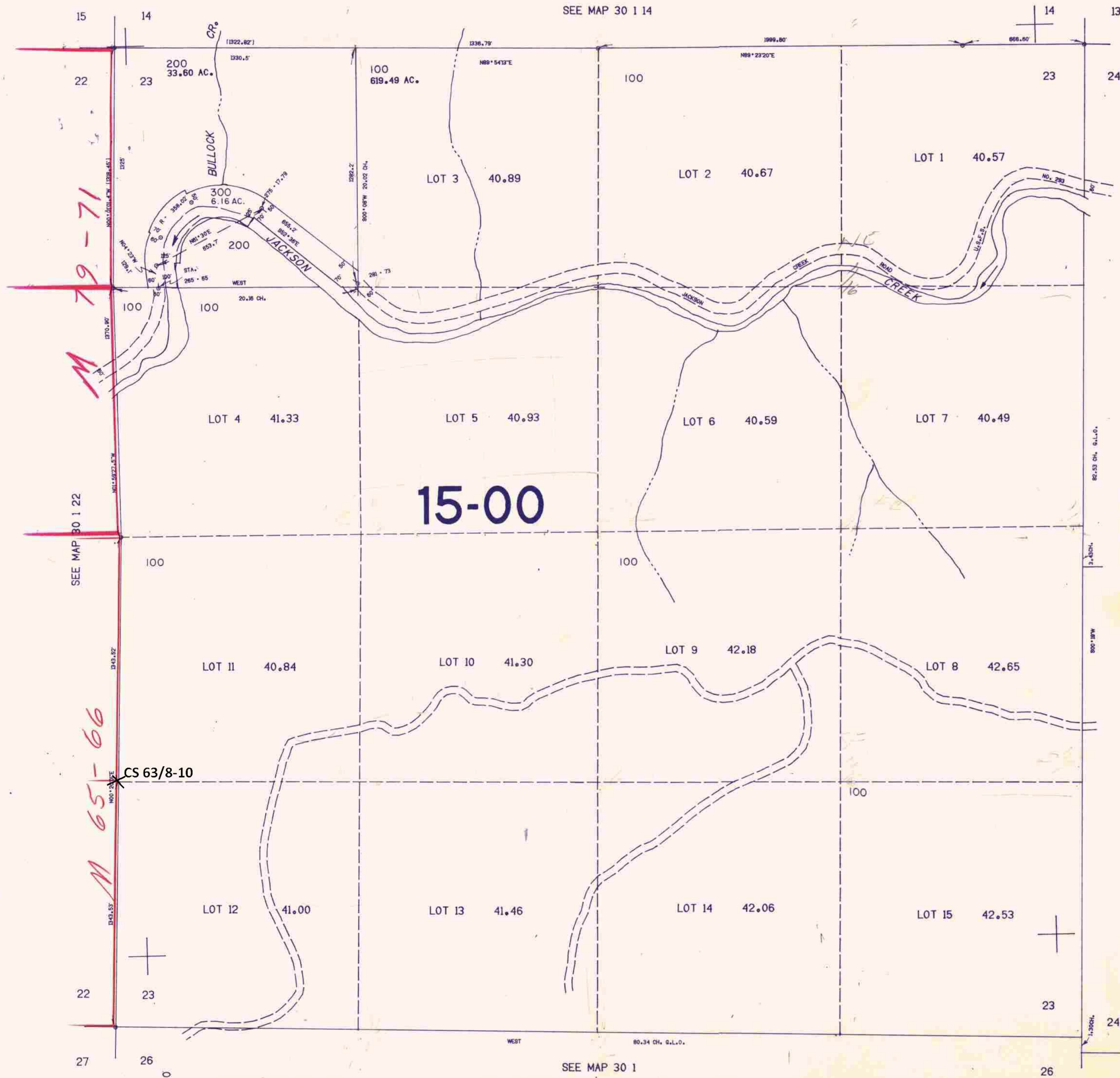


SECTION 23 T.30S. R.1W. W.M.
DOUGLAS COUNTY

30 1 23

THIS MAP WAS PREPARED FOR
ASSESSMENT PURPOSE ONLY.

1"=400'



M 79-71

M 65-66

15-00

SEE MAP 30 1

SEE MAP 30 1 22

SEE MAP 30 1

475.000

30 1 23

8/04 JS