

SECTION 22 T.30S. R.1W. W.M.
DOUGLAS COUNTY

30 1 22

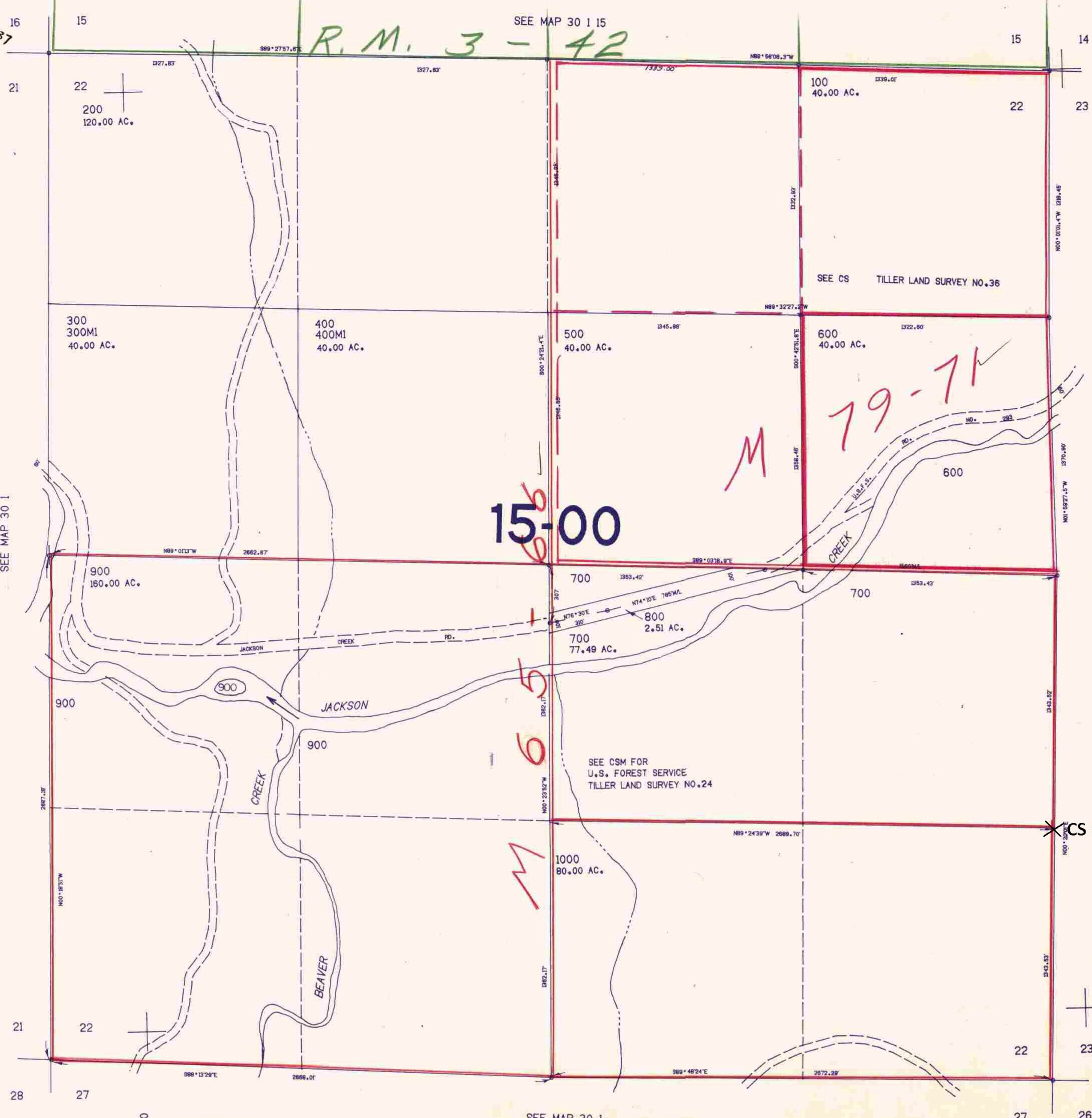
THIS MAP WAS PREPARED FOR
ASSESSMENT PURPOSE ONLY.

1"=400'

M 56-37

R.M. 3 - 42

SEE MAP 30 1 15



SEE MAP 30 1

SEE MAP 30 1 23

15-00

M 79-71

M 65

M

CS 63/8-10

475.000

SEE MAP 30 1

1.379.000

30 1 22
1/24 JS