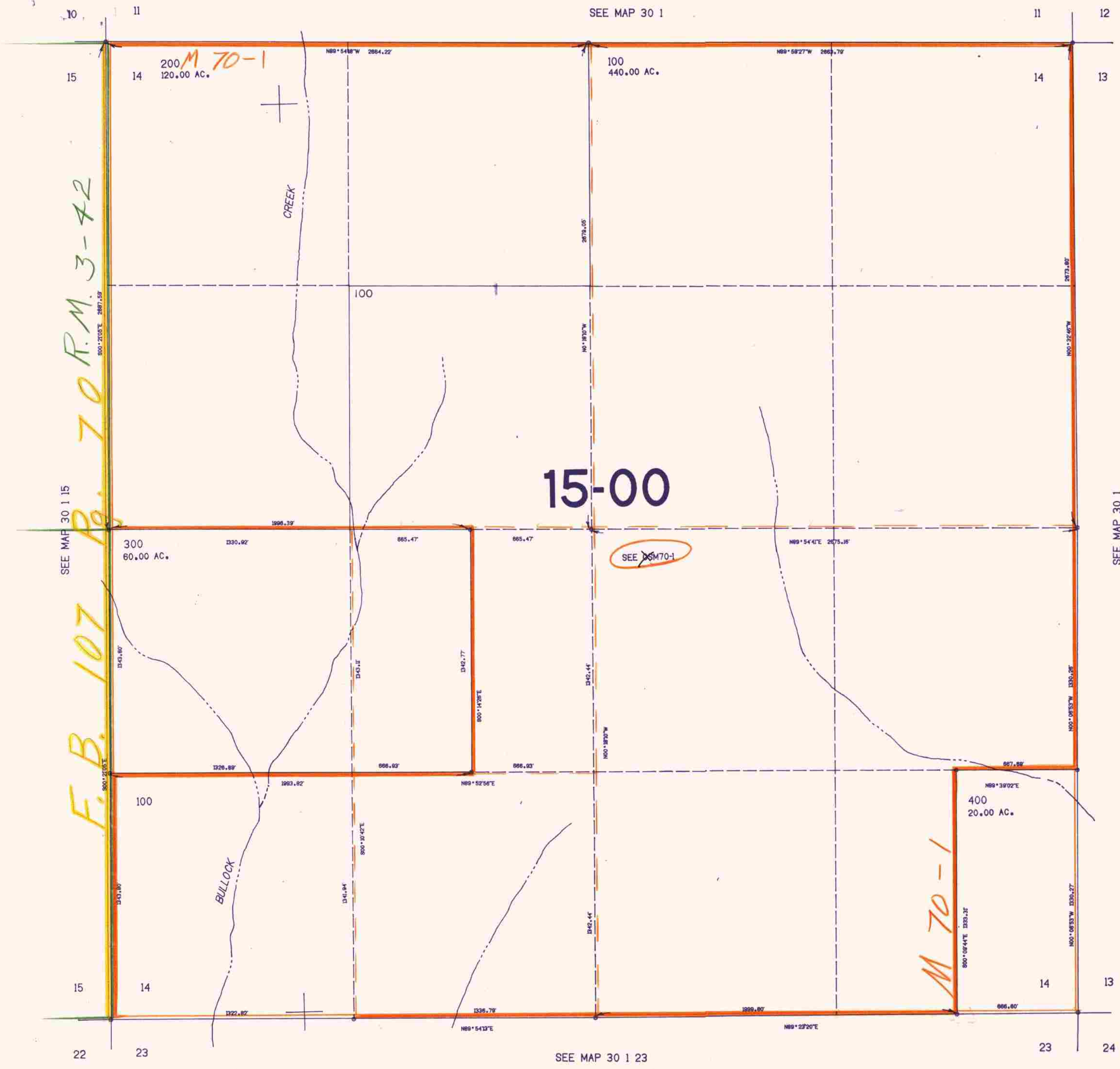


SECTION 14 T.30S. R.1W. W.M.  
DOUGLAS COUNTY

30 1 14

THIS MAP WAS PREPARED FOR  
ASSESSMENT PURPOSE ONLY.

1"=400'



*F.B. 107*  
*70 R.M. 3-42*

200 *M 70-1*  
120.00 AC.

100  
440.00 AC.

15-00

SEE DSM70-1

300  
60.00 AC.

400  
20.00 AC.

480.000

1:385,000

SEE MAP 30 1 23

30 1 14

8/84 BS