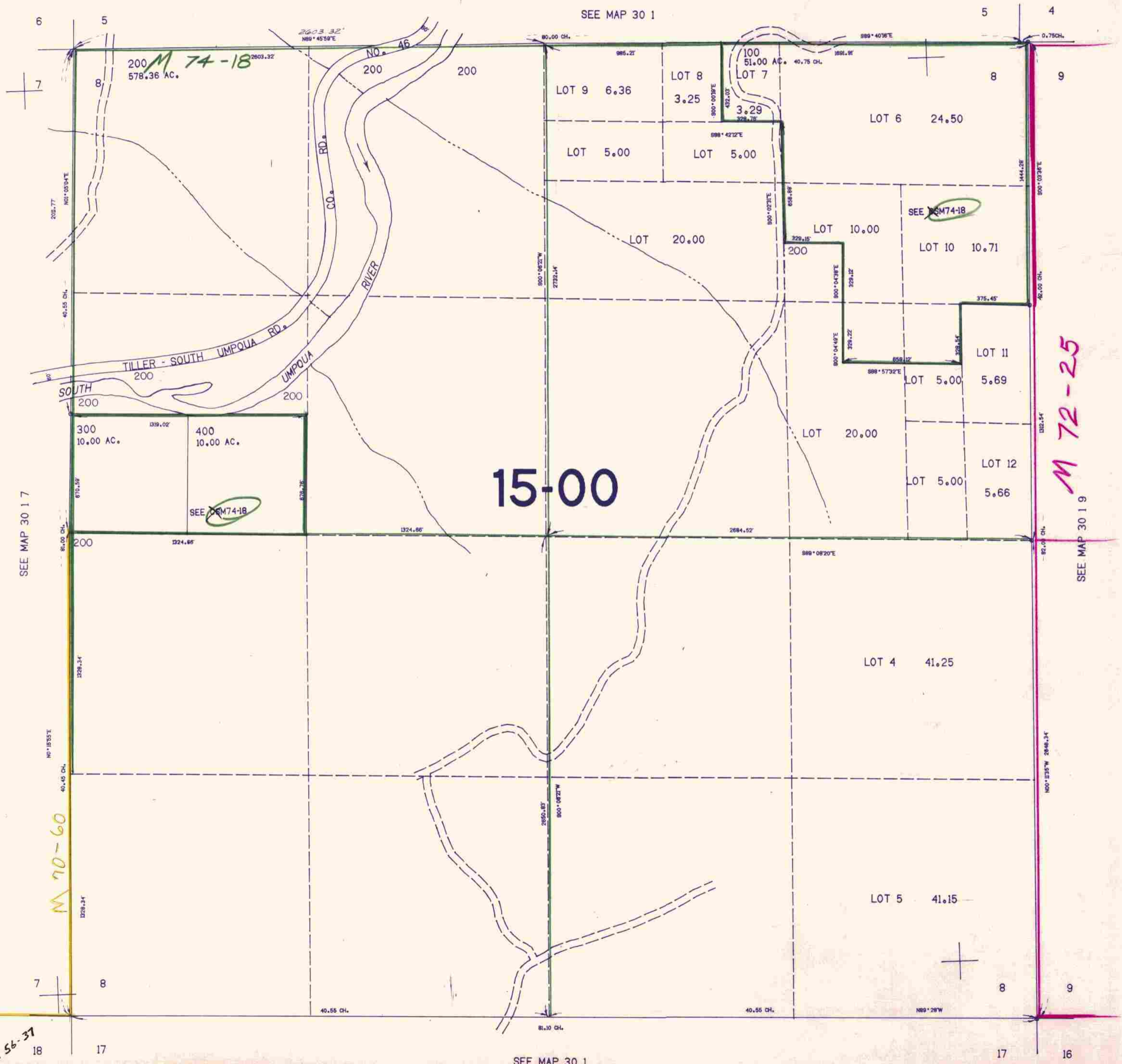


SECTION 8 T.30S. R.1W. W.M.  
DOUGLAS COUNTY

THIS MAP WAS PREPARED FOR  
ASSESSMENT PURPOSE ONLY.

1"=400'



SEE MAP 30 1 7

SEE MAP 30 1 9

M 72-25

M 70-60

M 56-37

15-00

486,000

1,372,000

8/84 BS