

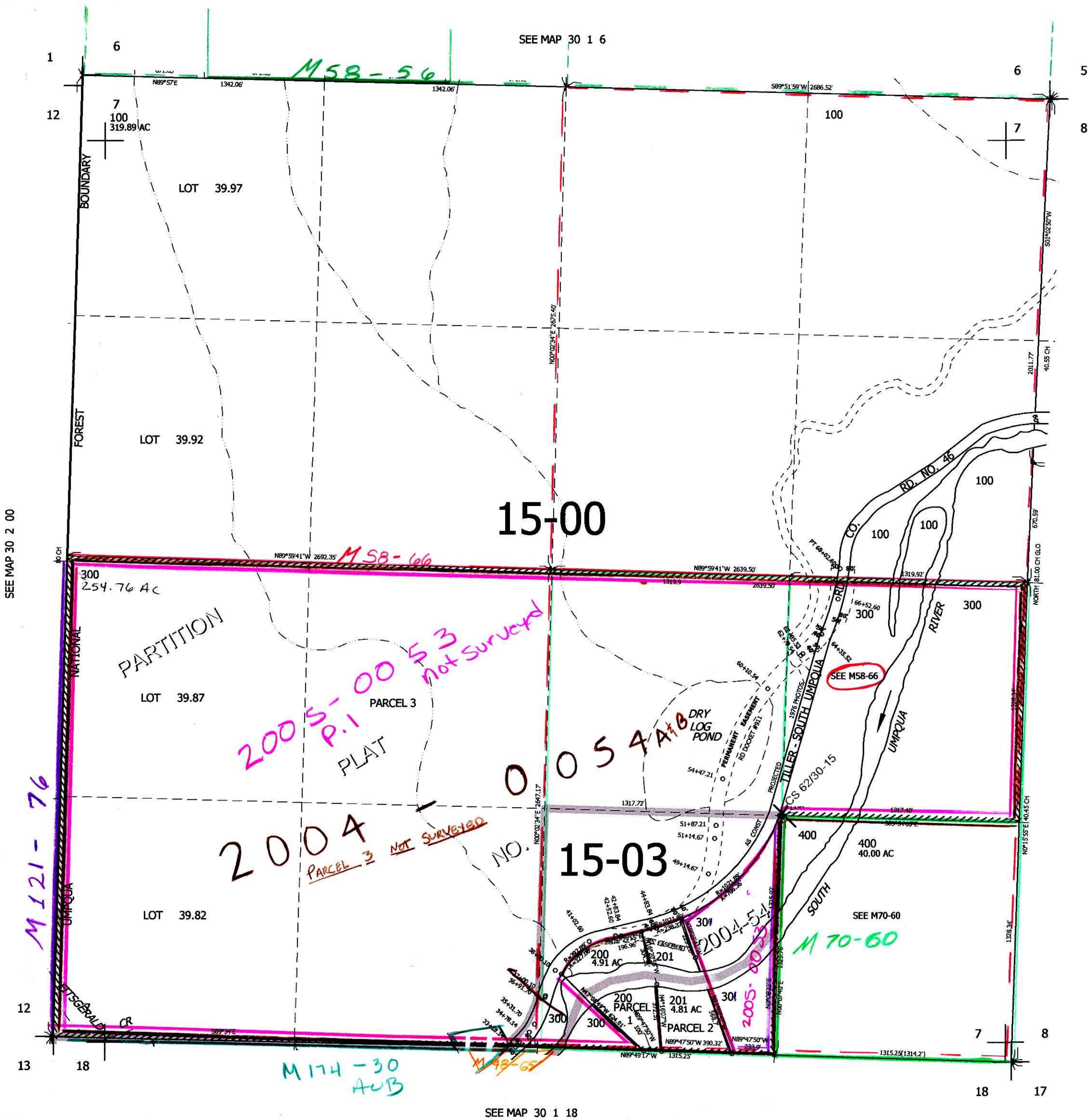
THIS MAP WAS PREPARED FOR ASSESSMENT PURPOSE ONLY.

SEC.7 T30S. R.1W. W.M.
DOUGLAS COUNTY

1" = 400'

REVISED ON
11-30-04

30 1 7



SEE MAP 30 1 6

SEE MAP 30 2 00

CANCELLED
202

SEE MAP 30 1 8

486,000

4,289,000

we
30 1 7