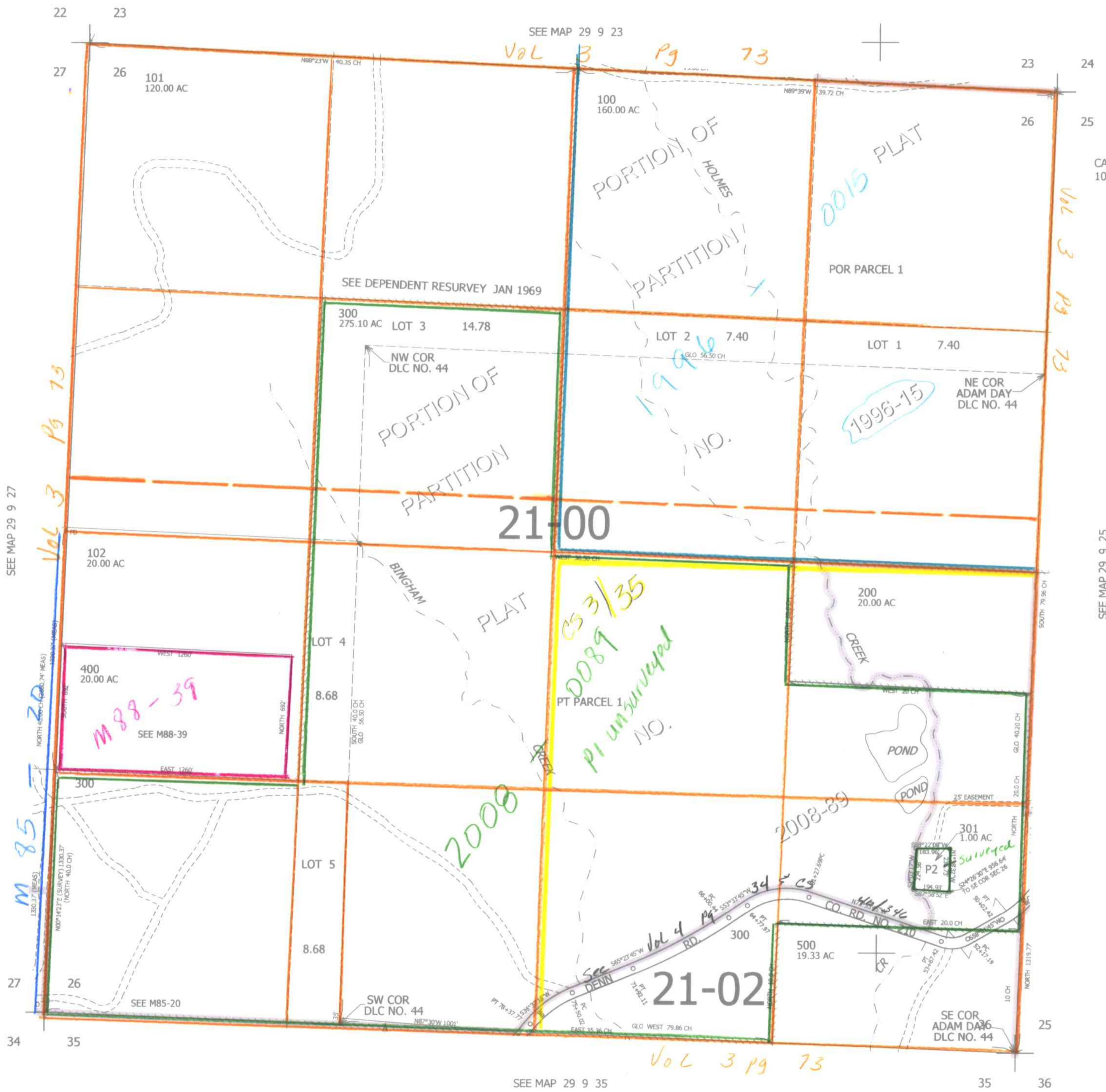


THIS MAP WAS PREPARED FOR ASSESSMENT PURPOSE ONLY.

SEC.26 T.29S. R.9W. W.M.
DOUGLAS COUNTY
1" = 400'

REVISED ON
7-6-11

29 9 26



CANCELLED NO'S
103 302

SEE MAP 29 9 25

507,000

4,059,000
CW
12/26/08
29 9 26