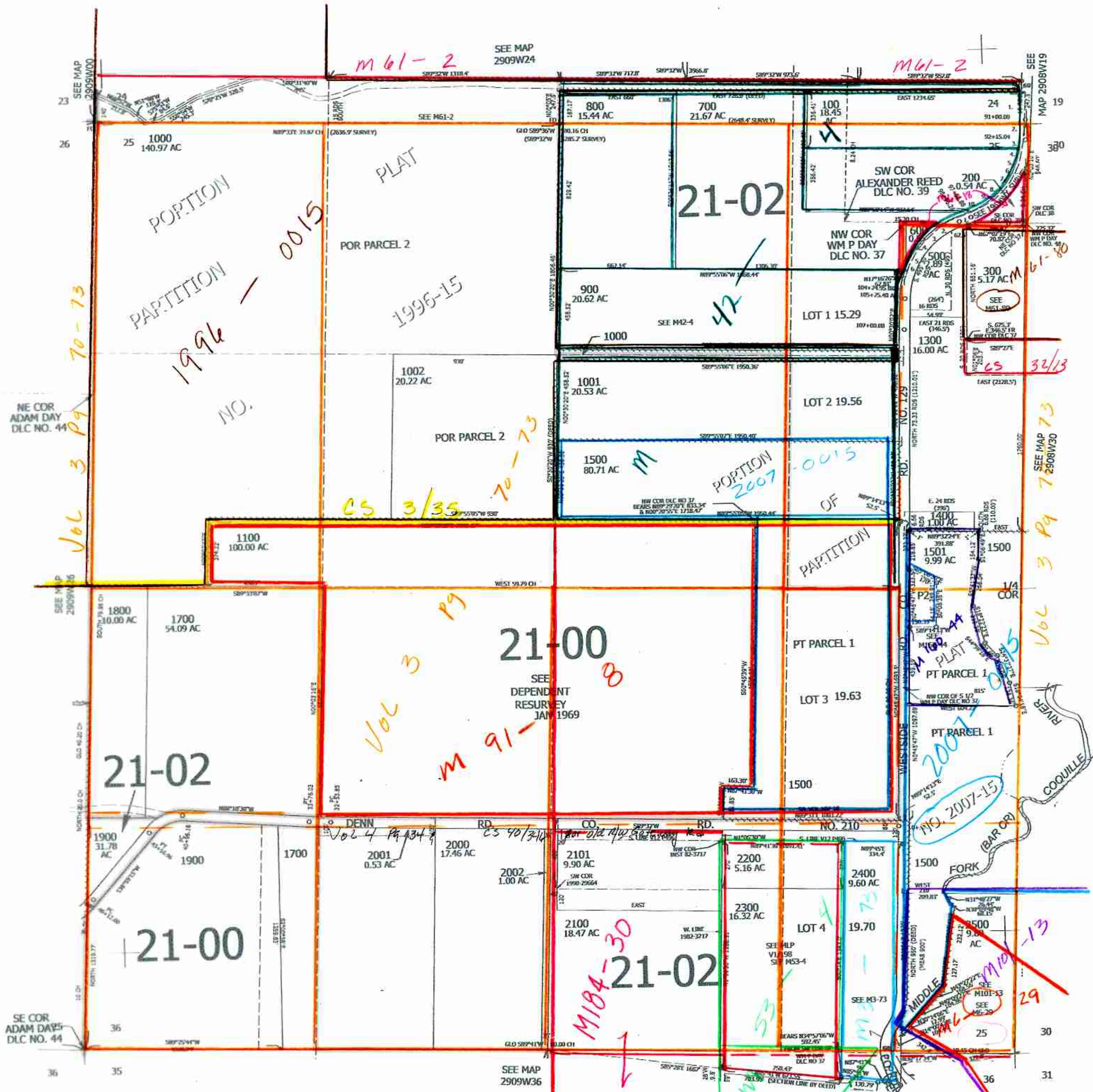


SEC.25 T.29S. R.09W. W.M.  
DOUGLAS COUNTY  
1" = 400'

CANCELLED NOS:  
300M1 2201 2301  
1003 1200 1600  
2501 1502 1503  
400 2102

THIS MAP WAS PREPARED FOR  
ASSESSMENT PURPOSE ONLY

- PARCEL 600 & 700
- 581°38'41"W 138.44'
  - 55°20'54"W 72.45'
  - 546°40'31"W 111.88'
  - 537°50'29"W 65.03'
  - 527°23'56"W 95.5'
  - 517°16'26"W 21.78'
- PARCEL 100
- 581°44'31"W 100.41'
  - 581°19'22"W 112.31'
  - 581°14'22"W 44.87'
  - 581°14'22"W 71.51'
  - 520°55'24"W 54.1'
  - 528°41'32"W 77.7'
  - 537°57'24"W 61.99'
  - 547°40'07"W 69.56'
  - 557°21'18"W 65.3'
  - 563°08'59"W 79.98'



SE COR ADAM DAY'S DLC NO. 44

SEE MAP 2909W36

SEE MAP 2908W19

SEE MAP 2909W24

SEE MAP 2908W30

7/22/07

290925 SP