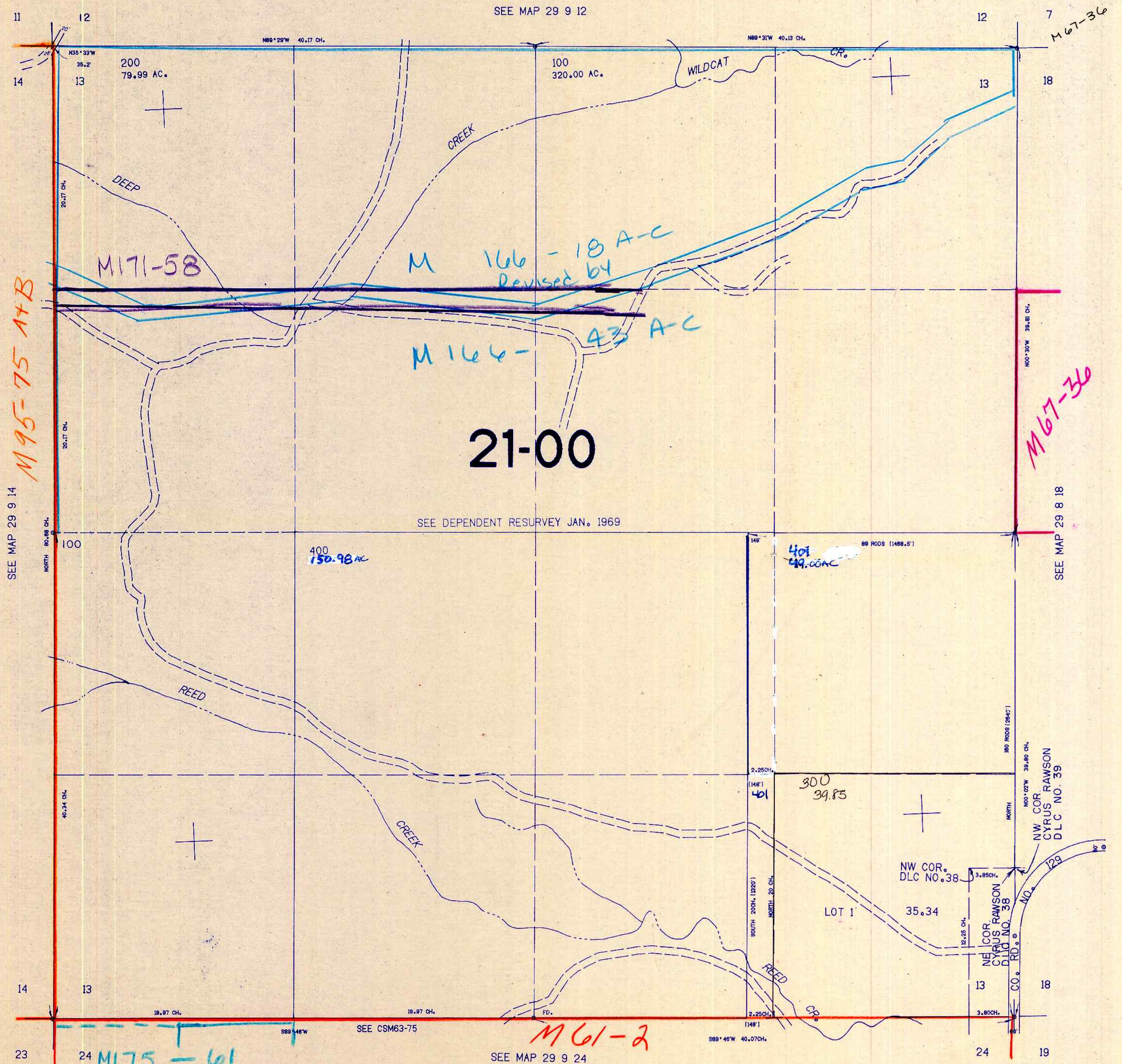


SECTION 13 T.29S. R.9W. W.M.
DOUGLAS COUNTY

1"=400'

THIS MAP WAS PREPARED FOR
ASSESSMENT PURPOSE ONLY.



21-00

SEE DEPENDENT RESURVEY JAN. 1969

SEE MAP 29 9 14

SEE MAP 29 8 18

SEE MAP 29 9 24

518,000

1144,000