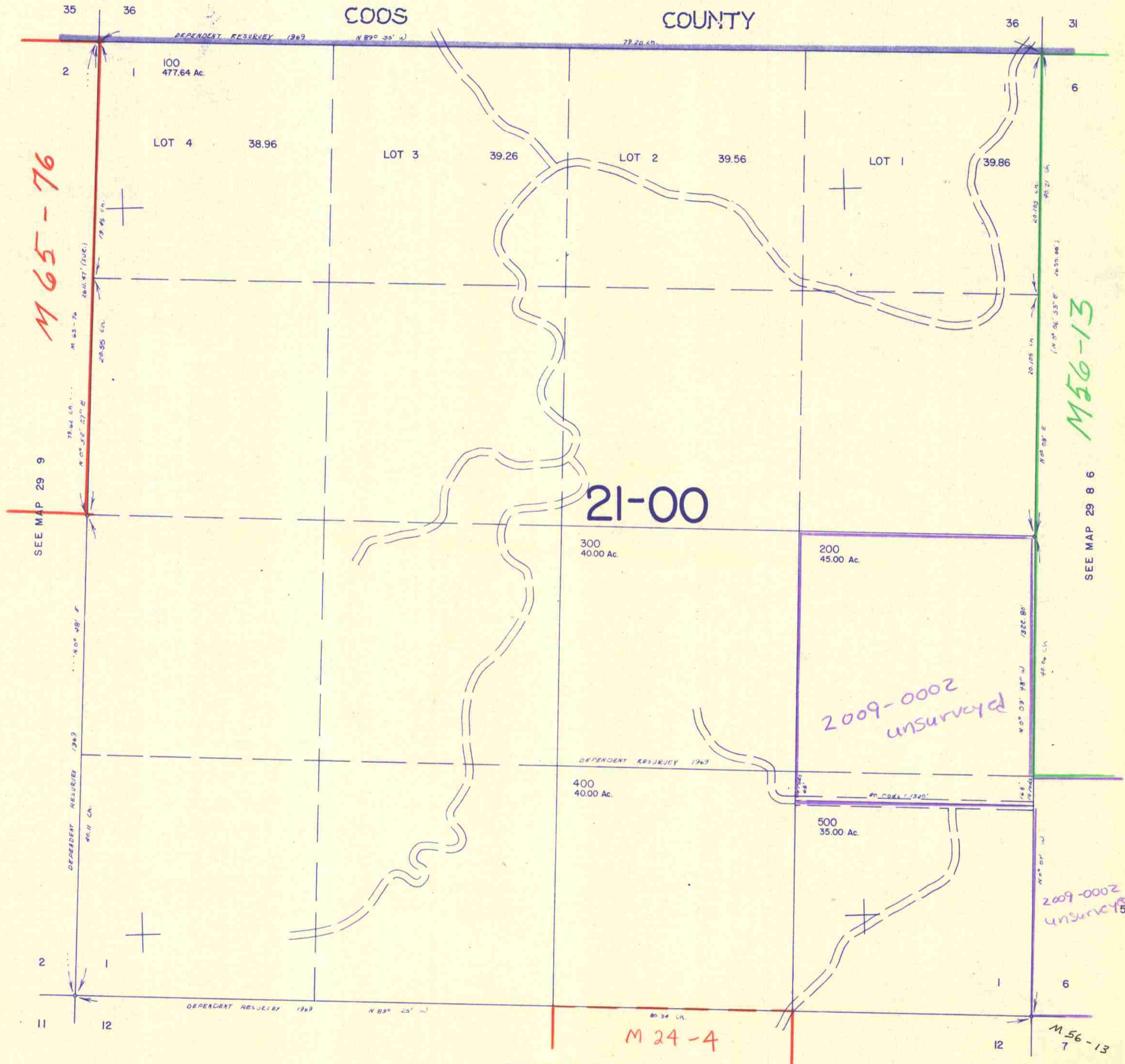


SECTION 1 T.29S. R 9 W. W.M.
DOUGLAS COUNTY

1" = 400'



M 65-76

SEE MAP 29 9

21-00

M 56-13

SEE MAP 29 8 6

2009-0002
unsurveyed

2009-0002
unsurveyed 528,00

M 24-4

M 56-13

SEE MAP 29 9 12

1,144,000