

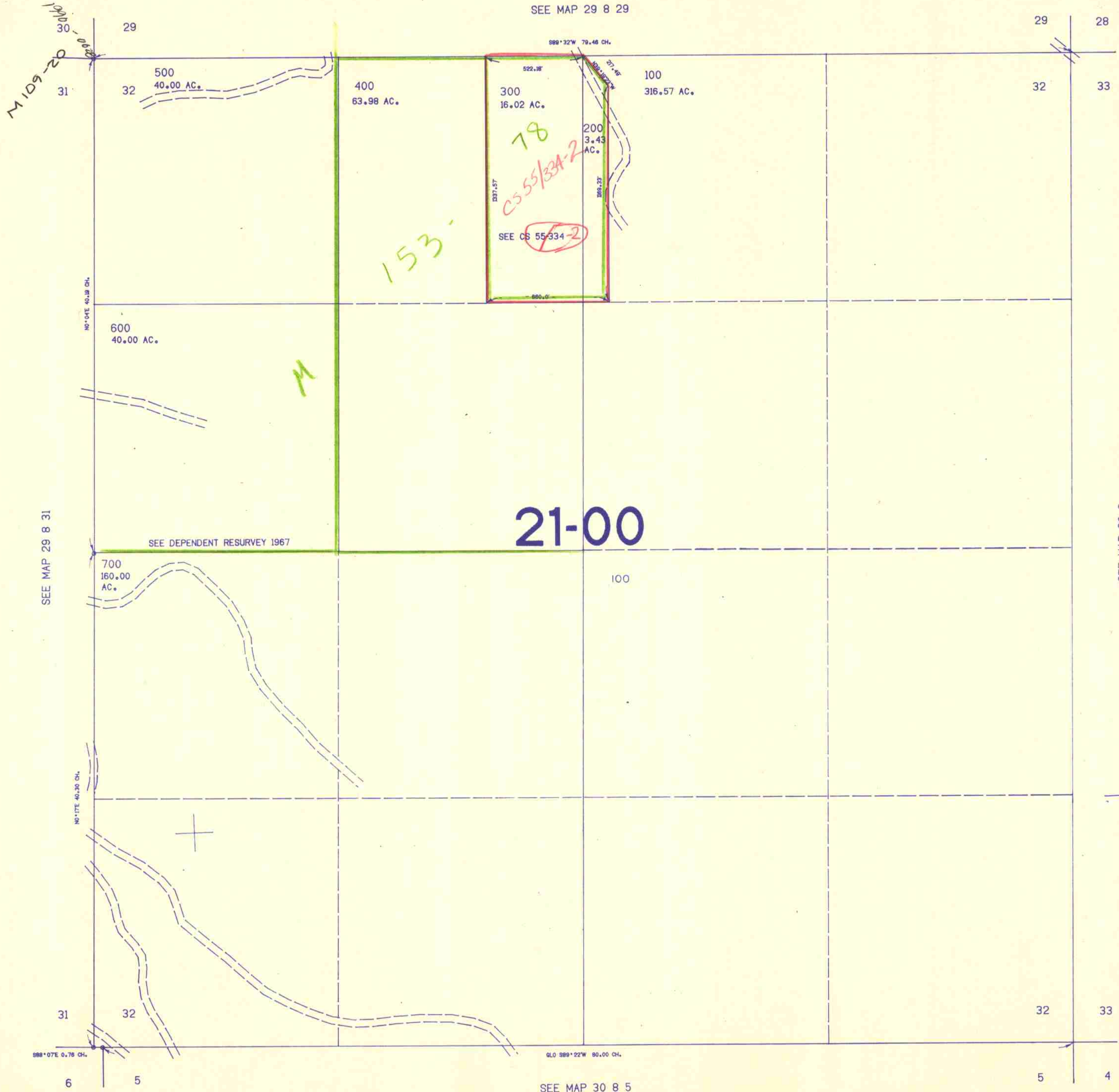
SECTION 32 T.29S. R.8W. W.M.  
DOUGLAS COUNTY

29 8 32

THIS MAP WAS PREPARED FOR  
ASSESSMENT PURPOSE ONLY.

1"=400'

SEE MAP 29 8 29



SEE MAP 29 8

502.000

SEE MAP 30 8 5

29 8 32

1155.000

3/85  
C.M.O.