

THIS MAP WAS PREPARED FOR ASSESSMENT PURPOSE ONLY.

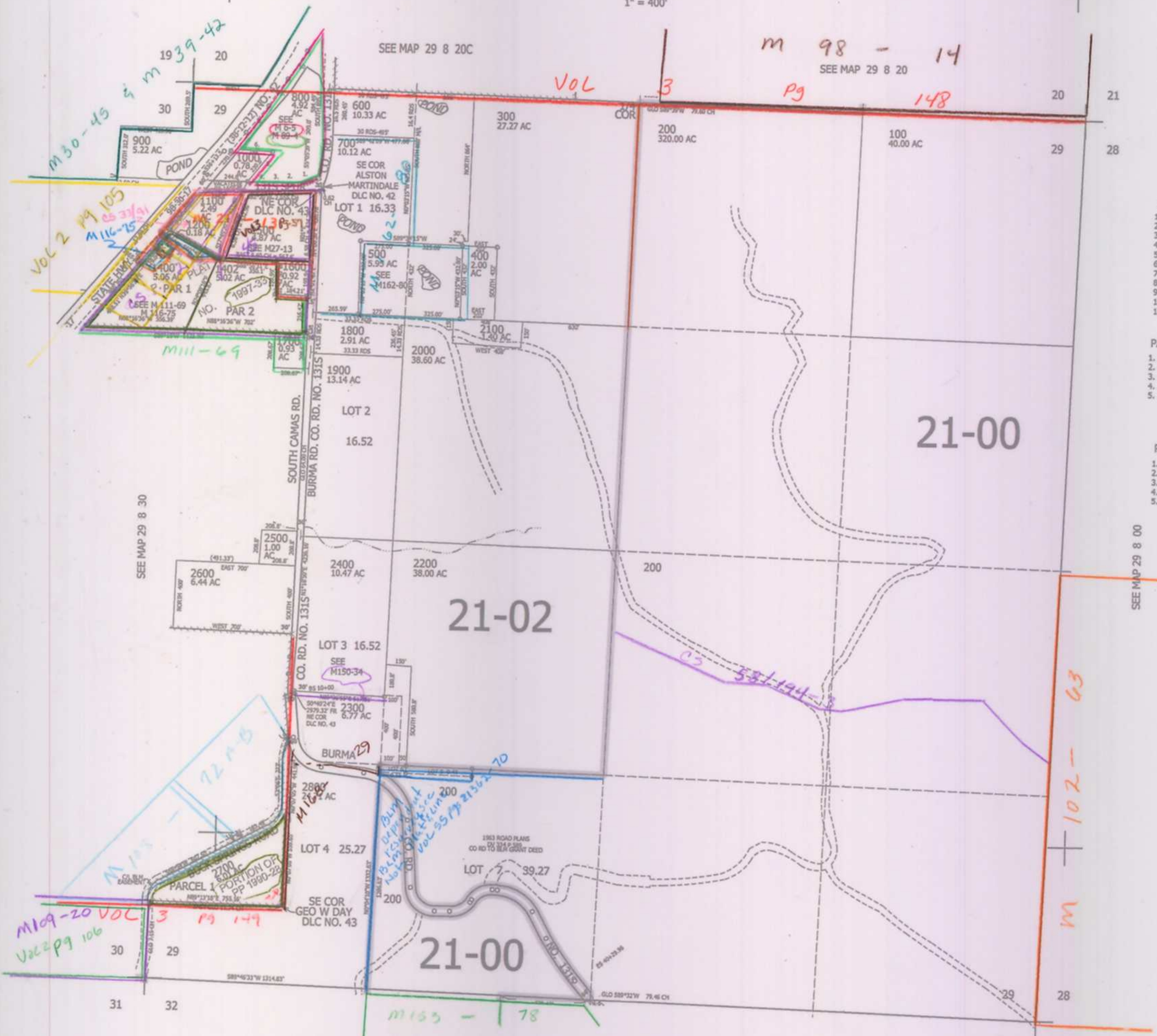
SEC.29 T.29S. R.8W. W.M. DOUGLAS COUNTY

REVISED ON 7-7-14

29 8 29

1" = 400'

CANCELLED NO'S
901 1101 1300
1401 2401 1403
701 2301 2801



- PARCEL 800
1. S62°04'W 93'
 2. S71°23'W 64.3'
 3. S57°25'W 90'
 4. S88°43'W 200'
 5. N38°20'E 229.5'
 6. S89°30'W 244'
 7. N37°57'E 151'
 8. N36°05'E 200'
 9. N34°20'E 200'
 10. N32°18'E 200'
 11. N30°12'E 200'

- PARCEL 1200
1. N53°10'20"W 64.15'
 2. N42°07'30"W 64.26'
 3. N39°40'E 78.55'
 4. S50°43'20"E 124.71'
 5. S37°40'30"W 85.44'

- PARCEL 1400
1. S42°02'E 26.13'
 2. S53°04'50"E 85.09'
 3. N37°49'10"E 85.09'
 4. N50°43'20"W 87.52'
 5. N39°36'33"E 40'

SEE MAP 29 8 00

507,000

4,076,000

CW 12/11/08

29 8 29

SEE MAP 29 8 32

SEE MAP 29 8 30

SEE MAP 29 8 20C

SEE MAP 29 8 20