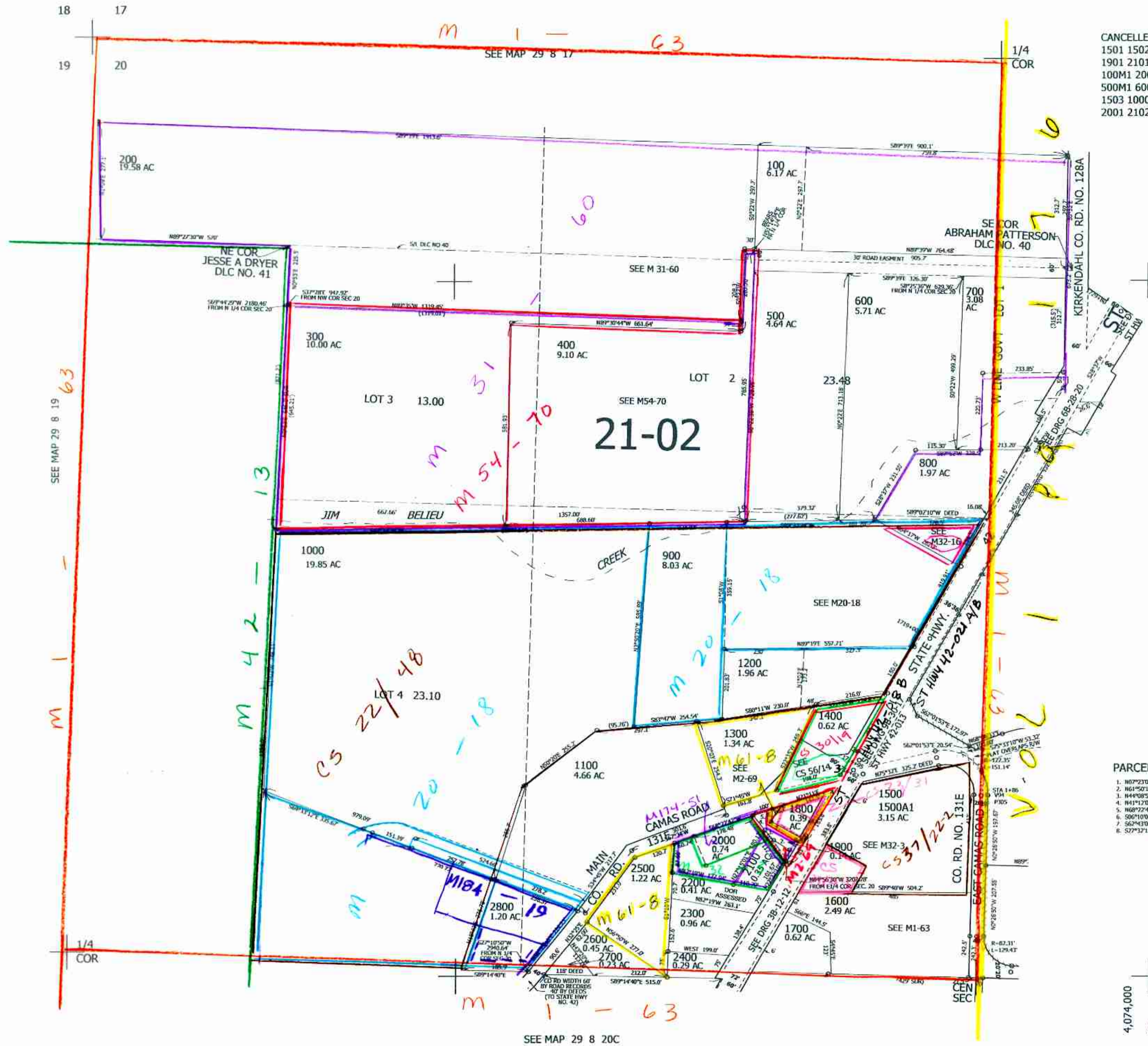


THIS MAP WAS PREPARED FOR ASSESSMENT PURPOSE ONLY.

NW1/4 SEC.20 T.29S. R.8W. W.M.  
DOUGLAS COUNTY  
1" = 200'

REVISED ON  
6-7-18

29 8 20B



CANCELLED NO'S  
1501 1502 1701  
1901 2101 1400A1  
100M1 200M1 300M1  
500M1 600M1 700M1  
1503 1000A1 1902  
2001 2102

SEE MAP 29 8 20A

PARCEL 1900  
1. N07°23'01"E 29.89'  
2. N61°50'16"W 57.95'  
3. N44°08'57"W 38.74'  
4. N41°17'00"W 52.84'  
5. N68°22'42"E 59.83'  
6. S06°10'00"W 36.80'  
7. S62°43'00"E 101.71'  
8. S27°32'10"W 71.47'

514,000

4,074,000  
5/14/10

29 8 20B

SEE MAP 29 8 20C