

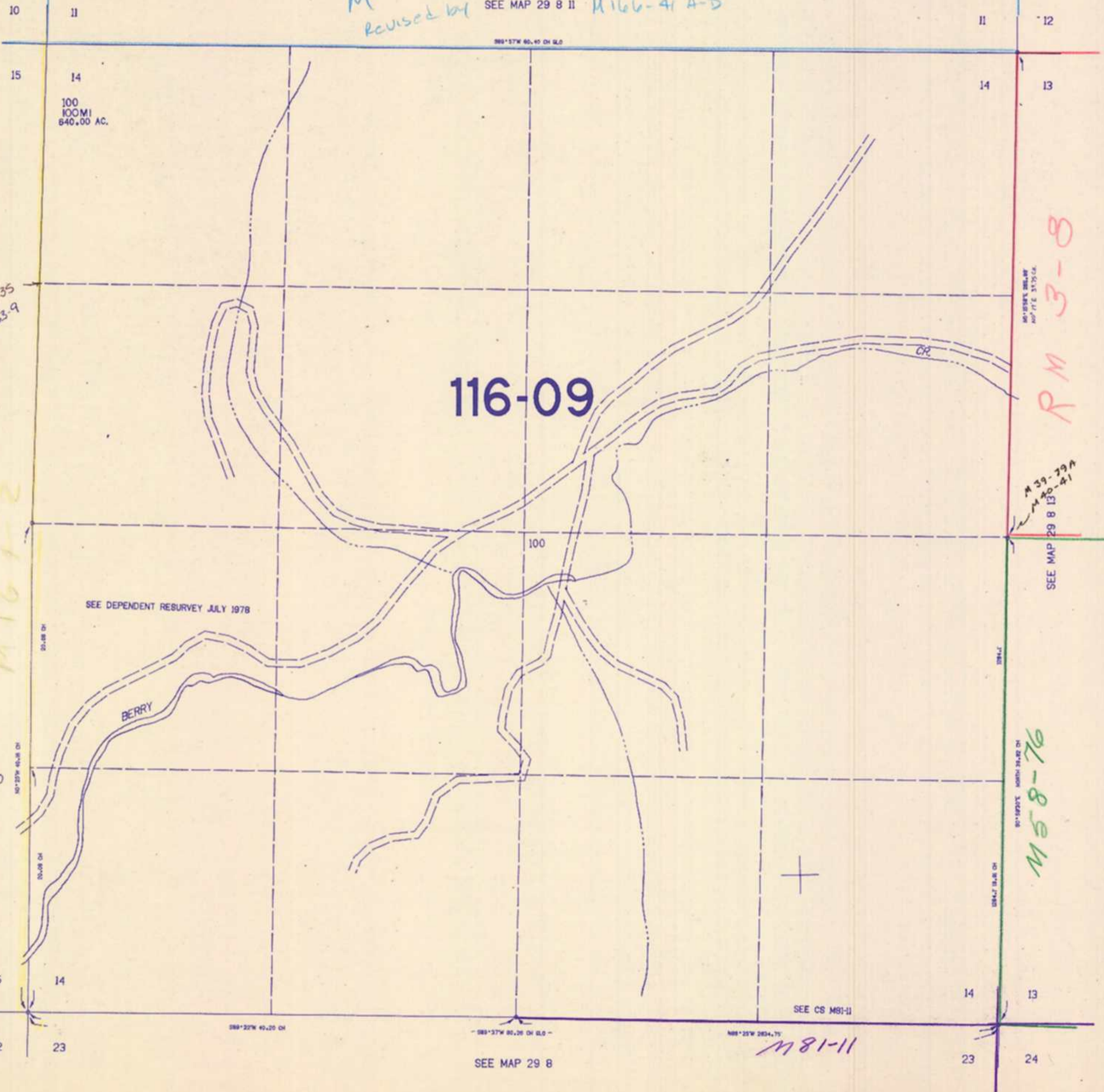
SECTION 14 T.29S. R.8W. W.M  
DOUGLAS COUNTY

29 8 14

THIS MAP WAS PREPARED FOR  
ASSESSMENT PURPOSE ONLY.

1"=400'

M 1166-24 A-D  
Revised by SEE MAP 29 8 11 M166-41 A-D



29 8 14

2/85  
CMO