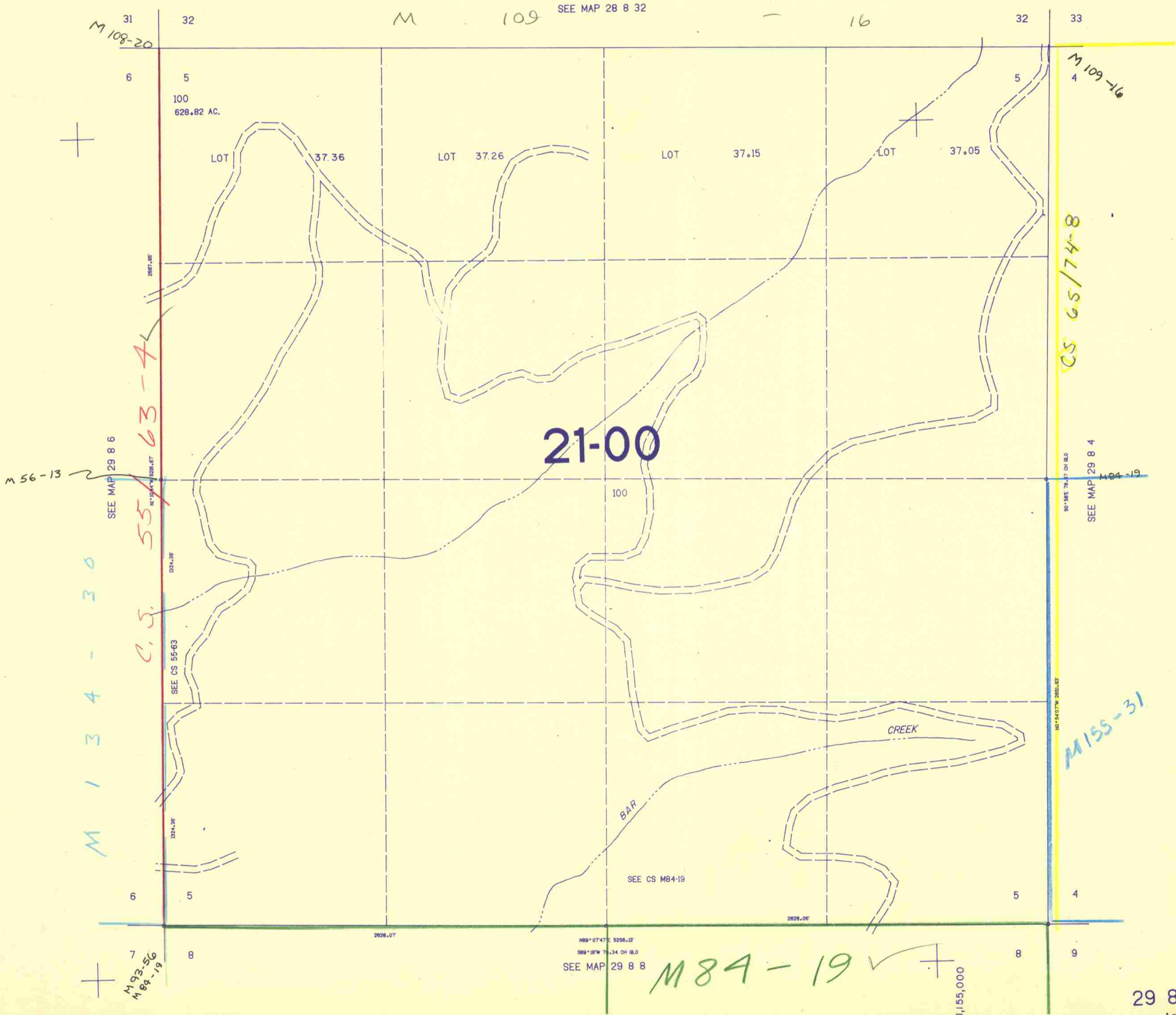


SECTION 5 T.29S. R.8W. W.M.
DOUGLAS COUNTY

THIS MAP WAS PREPARED FOR
ASSESSMENT PURPOSE ONLY.

1"=400'



21-00

M 134 - 30

C.S. 55-63

CS 65/74-8

M 155-31

M 84-19 ✓

1,55,000