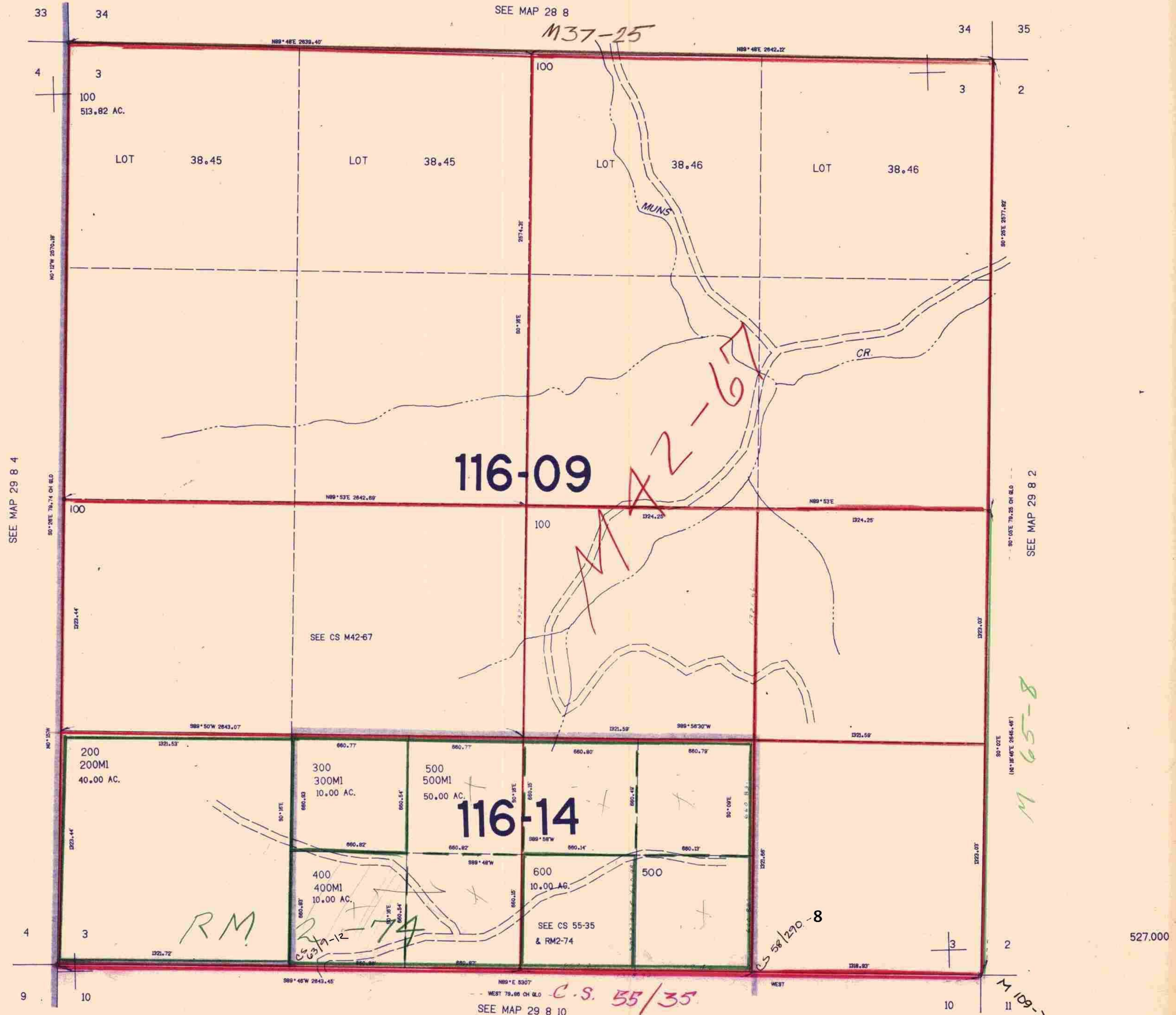


THIS MAP WAS PREPARED FOR ASSESSMENT PURPOSE ONLY.

SECTION 3 T.29S. R8W. W.M. DOUGLAS COUNTY

29 8 3

1"=400'



SEE MAP 29 8 4

SEE MAP 28 8

SEE MAP 29 8 2

116-09

116-14

M 65-8

RM

C.S. 55/35

C.S. 58/220-8

M 109-72

SEE MAP 29 8 10

M 83-9

29 8 3

2/85 CMO

1.166.000