

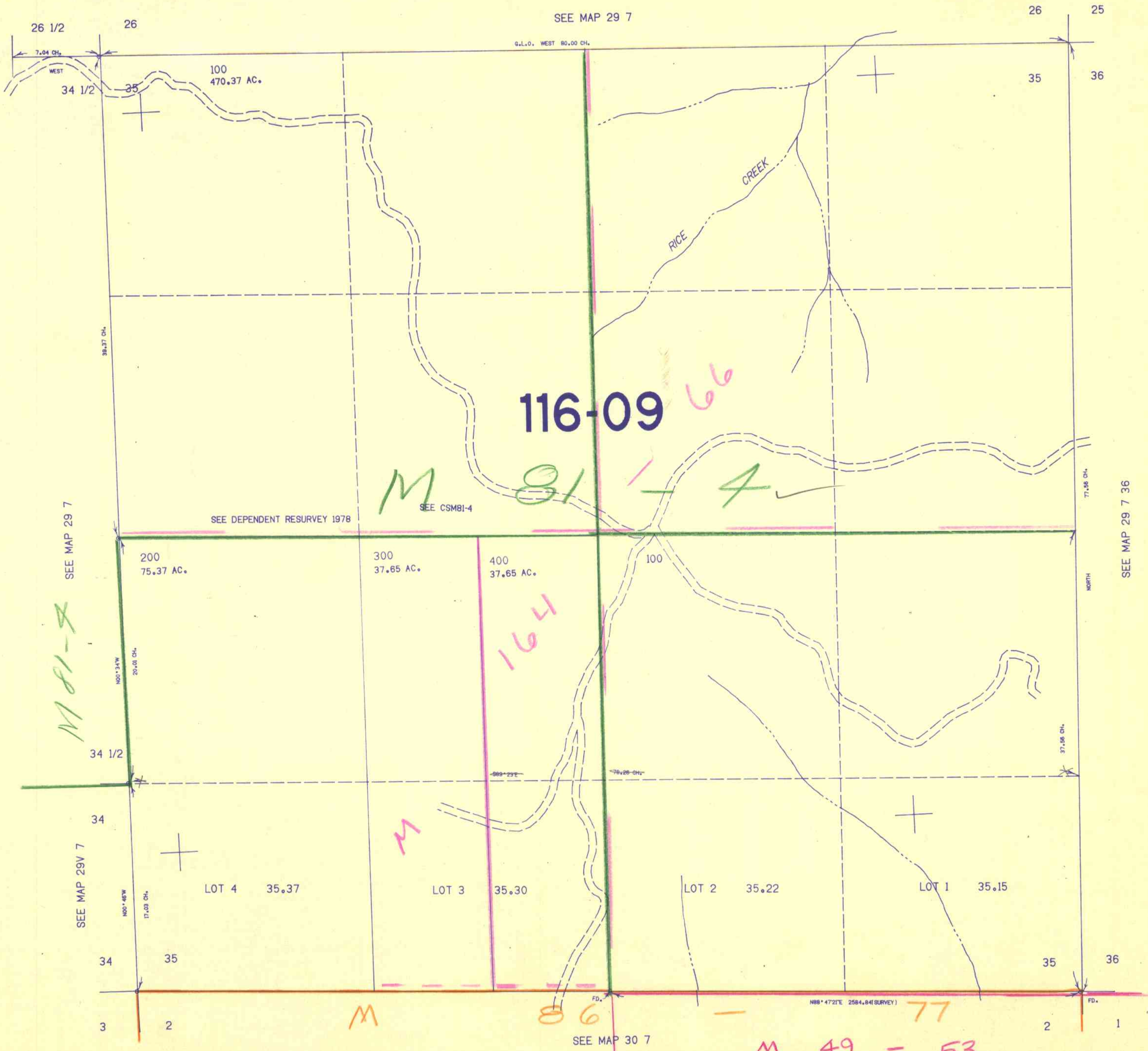
THIS MAP WAS PREPARED FOR ASSESSMENT PURPOSE ONLY.

SECTION 35 T.29S. R.7W. W.M.
DOUGLAS COUNTY

29 7 35

1"=400'

27
34



SEE MAP 29 7 36

SEE MAP 29 7

SEE MAP 29 V 7

SEE MAP 30 7

29 7 35

Handwritten initials/signature