

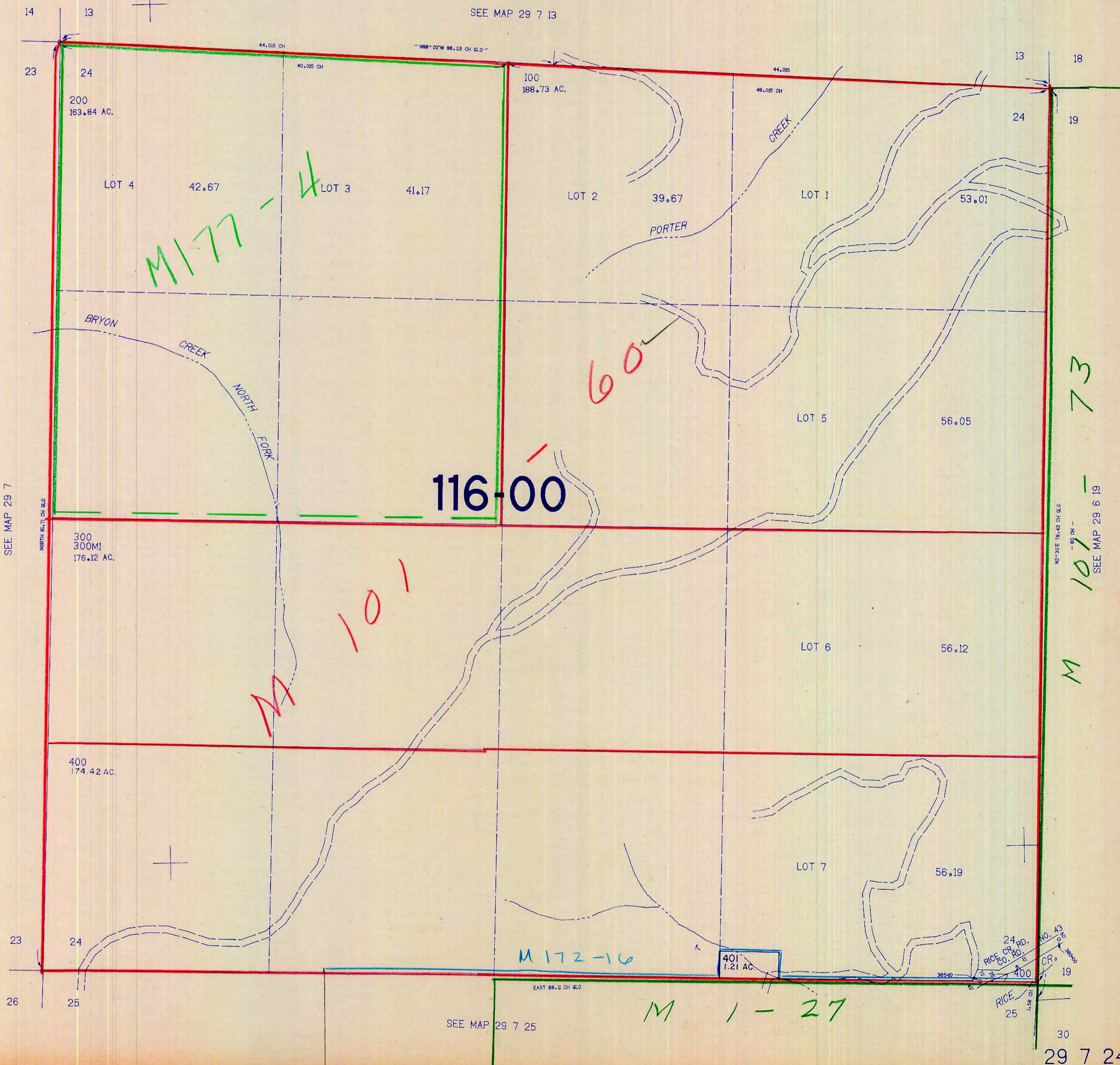
SECTION 24 T.29S. R.7W. W.M.
DOUGLAS COUNTY

29 7 24
REVISED: 3-15-91

THIS MAP WAS PREPARED FOR
ASSESSMENT PURPOSE ONLY.

1"=400'

SEE MAP 29 7 13



SEE MAP 29 7

SEE MAP 29 6 19

116-00

M 101

M 177-4

M 172-16

M 1-27

73

101

M

29 7 24

1,208,000

3/1/91