

SECTION 18 T.29S. R.7W. W.M.
DOUGLAS COUNTY

29 7 18

THIS MAP WAS PREPARED FOR
ASSESSMENT PURPOSE ONLY.

1"=400'

SEE MAP 29 7 7

M 50-11

M176-36

116-14

116-09

SEE CS RM3-8 & 30

RM 3-30

M28-69

SEE MAP 29 8 12

SEE MAP 29 8

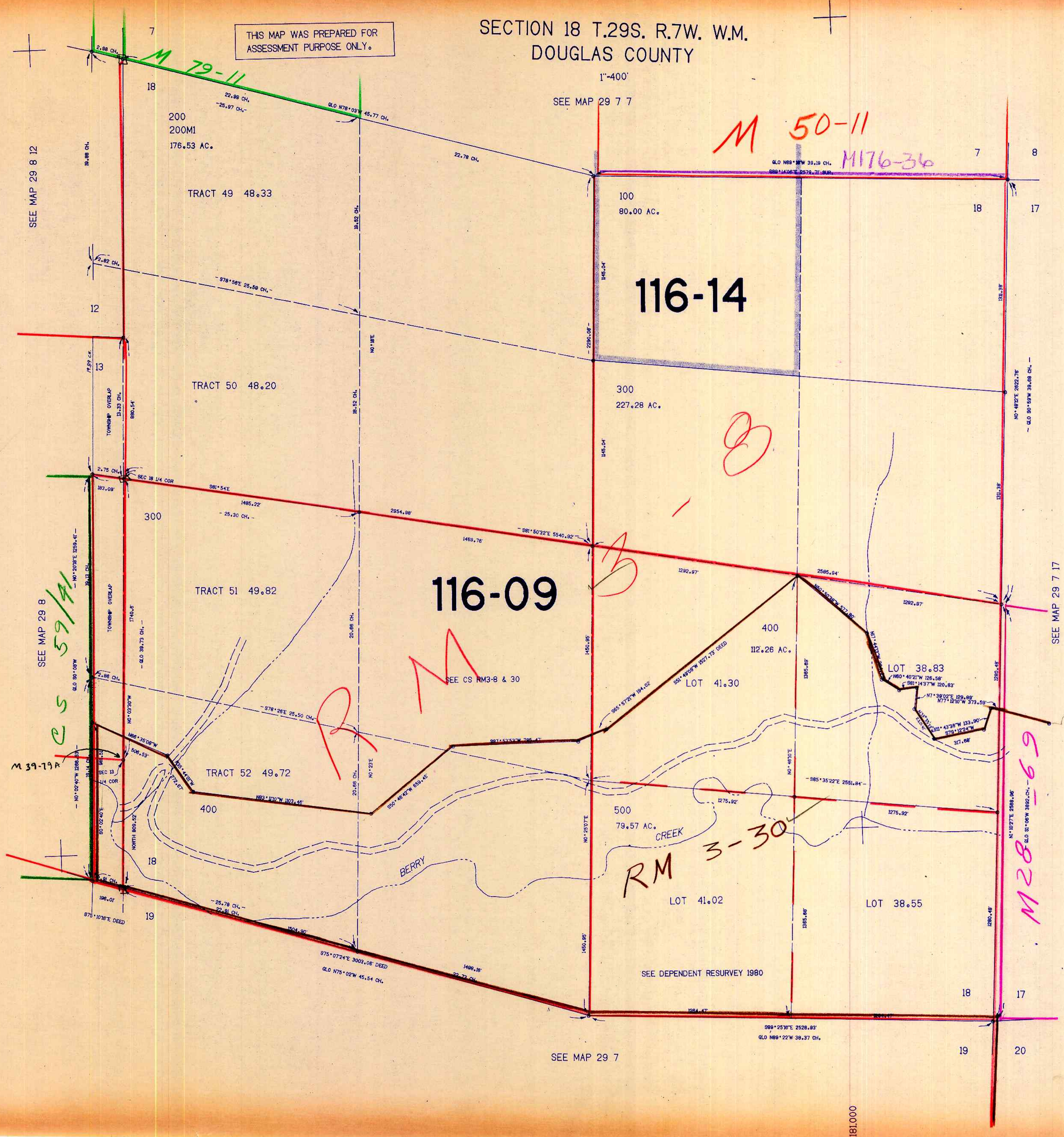
es 59/41

M 39-19A

SEE MAP 29 7 17

SEE MAP 29 7

29 7 18



1181.000

9/85
JL