

SECTION 12 T.29S. R.7W. W.M.  
DOUGLAS COUNTY

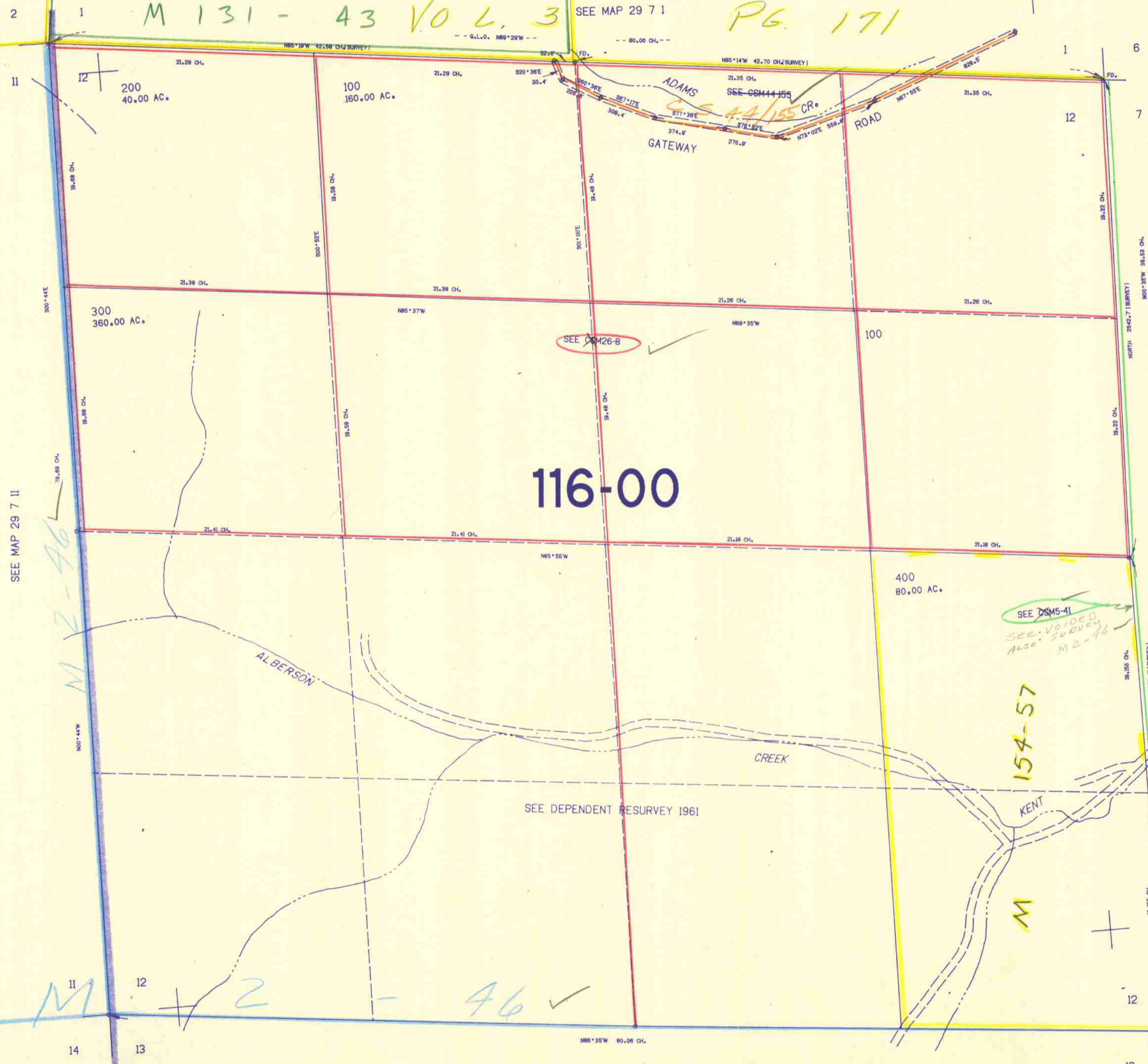
1"=400'

THIS MAP WAS PREPARED FOR  
ASSESSMENT PURPOSE ONLY.

M 131 - 43 VOL. 3

SEE MAP 29 7 1

PG 171



SEE MAP 29 7 11

SEE MAP 29 6 7

116-00

SEE CSM 5-41  
SEE VOIDED  
ALSO SURVEY  
M 2-96

SEE DEPENDENT RESURVEY 1961

SEE MAP 29 7

1203.000

521.000

9/05