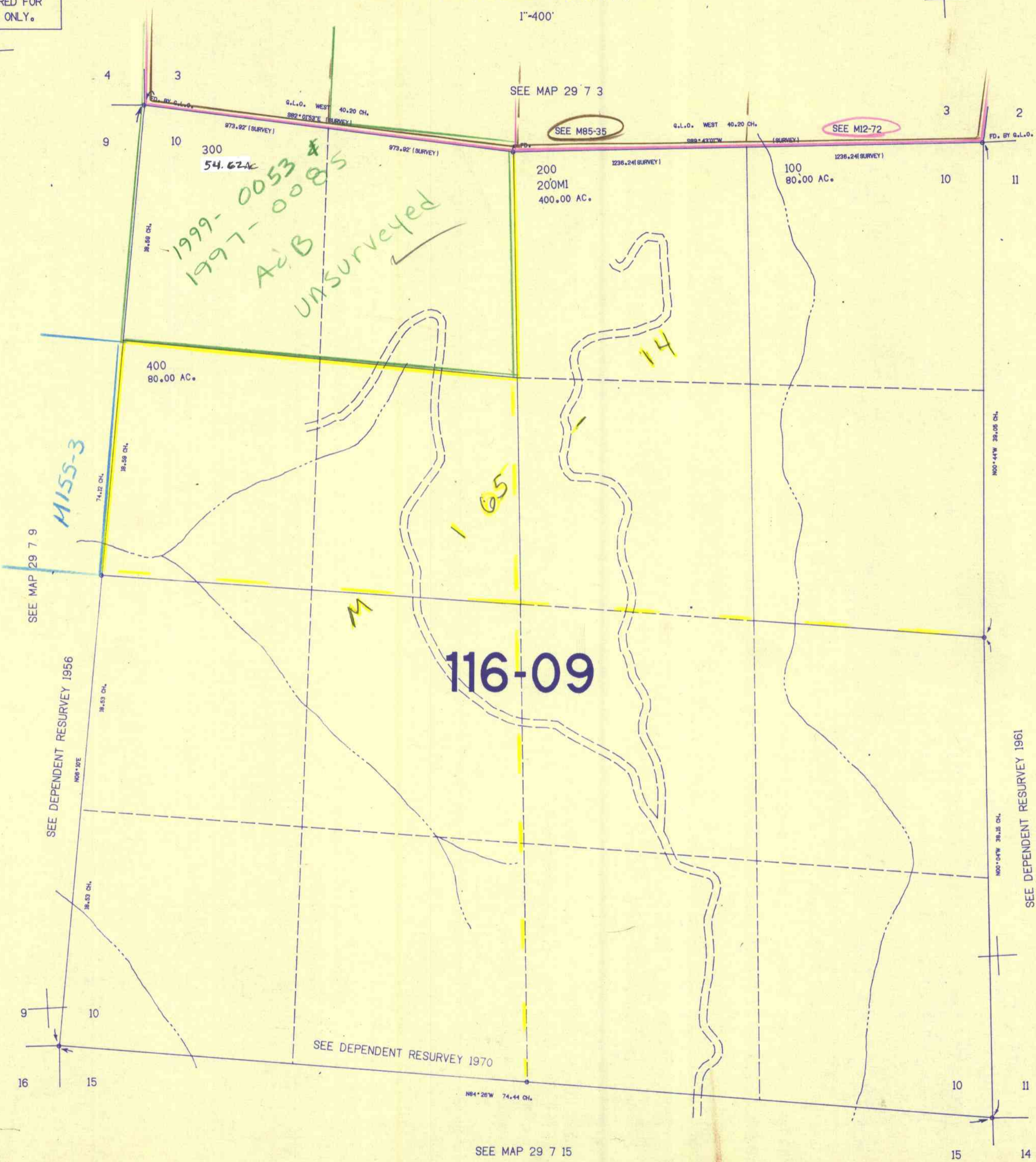


SECTION 10 T.29S. R.7W. W.M.
DOUGLAS COUNTY

29 7 10

THIS MAP WAS PREPARED FOR
ASSESSMENT PURPOSE ONLY.

1"=400'



SEE MAP 29 7 9

MISS-3

SEE DEPENDENT RESURVEY 1956

SEE DEPENDENT RESURVEY 1970

SEE MAP 29 7 15

SEE MAP 29 7 3

SEE M85-35

SEE M12-72

SEE MAP 29 7 11

SEE DEPENDENT RESURVEY 1961

522,000

1,197,000

29 7 10

1165/R