

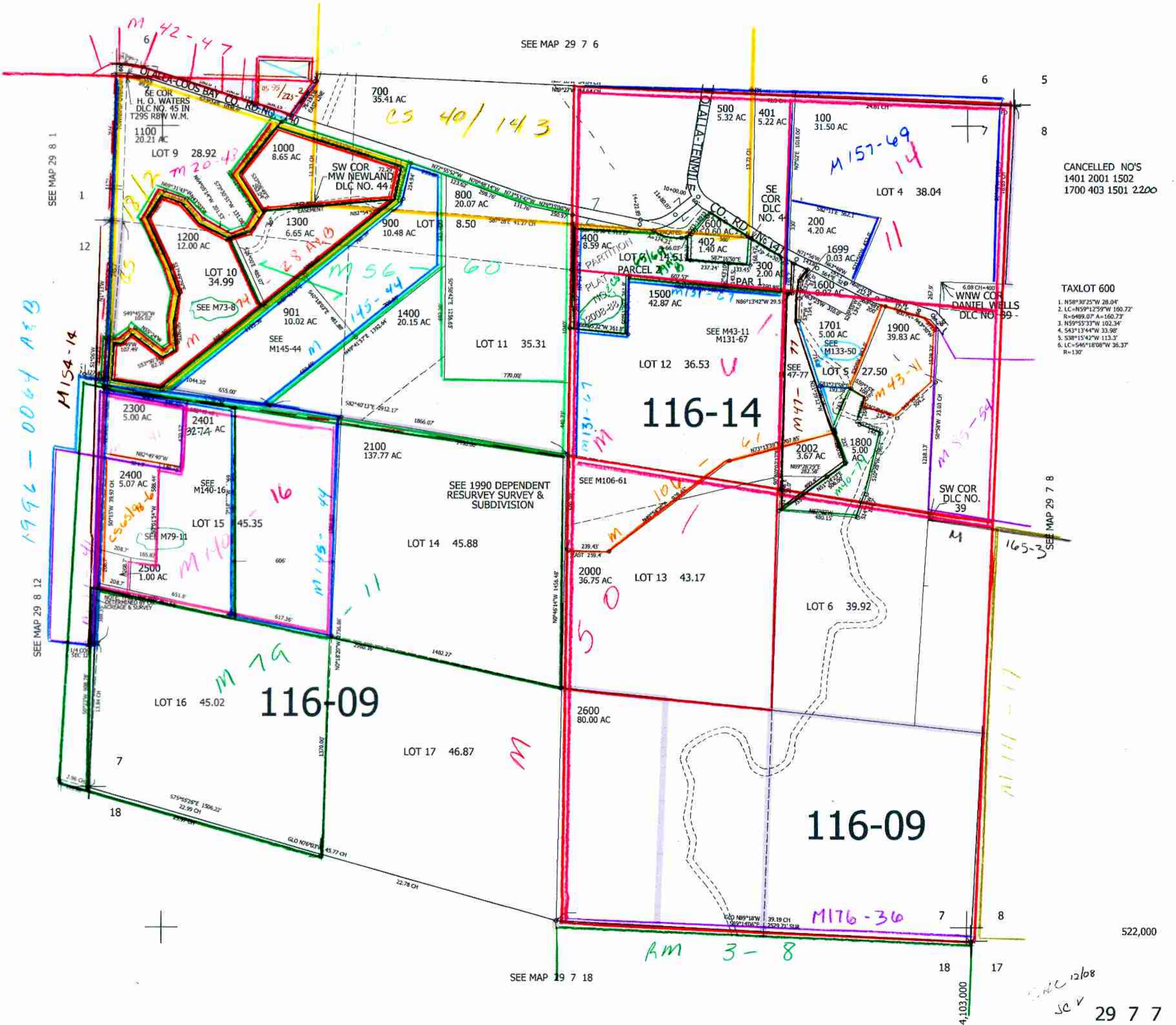
THIS MAP WAS PREPARED FOR ASSESSMENT PURPOSE ONLY.

SEC.7 T.29S. R.7W. W.M.
DOUGLAS COUNTY

1" = 400'

REVISED ON
11-5-12

29 7 7



CANCELLED NO'S
1401 2001 1502
1700 403 1501 2200

TAXLOT 600
1. N58°30'25"W 28.04'
2. LC=N59°12'59"W 160.72'
R=6489.07 A=160.73'
3. N59°55'33"W 102.34'
4. S43°13'44"W 33.98'
5. S38°15'42"W 113.3'
6. LC=S44°18'08"W 36.37'
R=130'

522,000

12/08
29 7 7