

SECTION 5 T.29S. R.7W. W.M.
DOUGLAS COUNTY

THIS MAP WAS PREPARED FOR
ASSESSMENT PURPOSE ONLY.

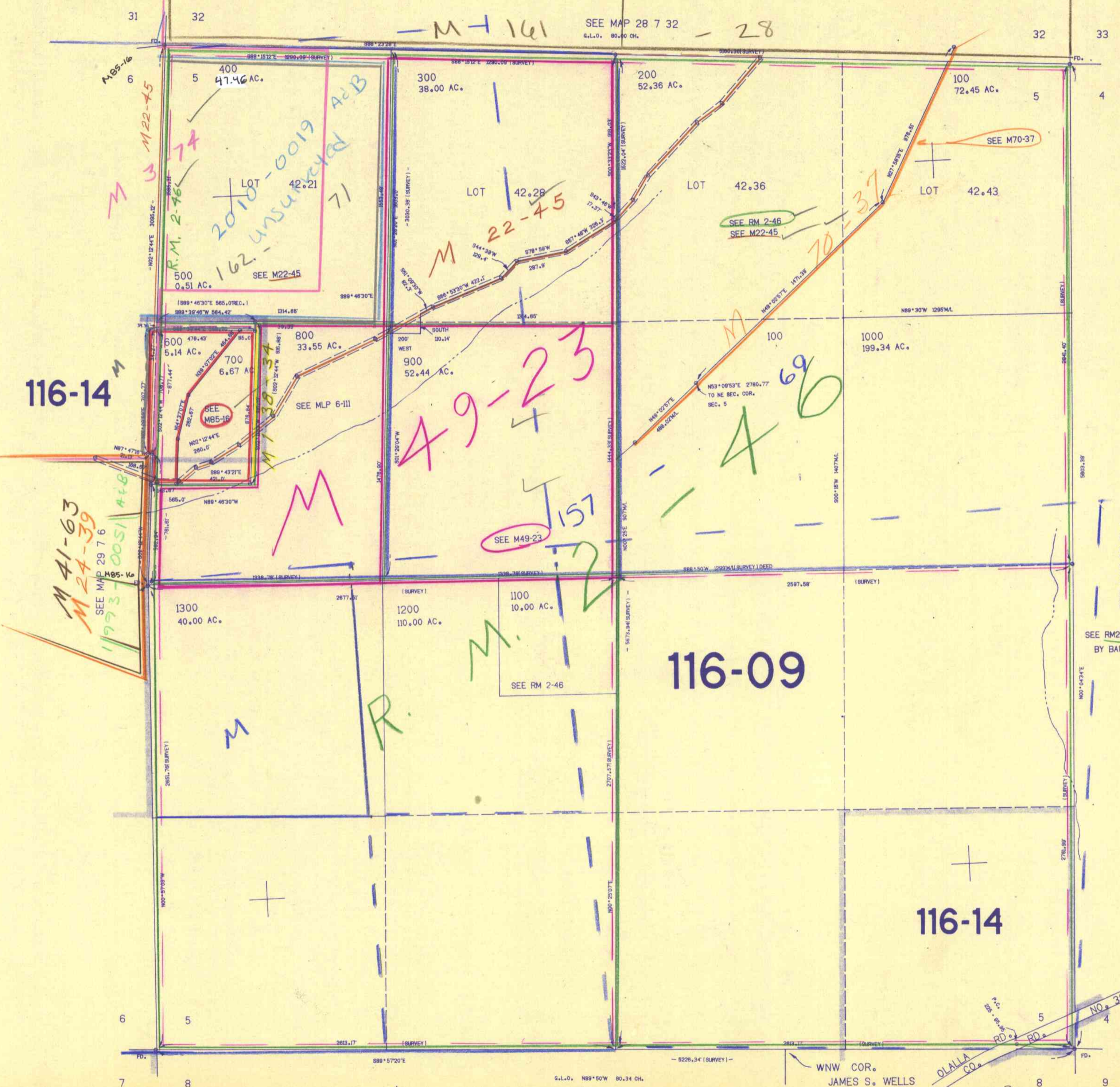
1"=400'

SEE MAP 28 7 32
G.L.O. 80.00 CH.

116-14

116-09

116-14



SEE MAP 29 7 4
SEE RM2-46
BY BAUGHMAN

WNW COR.
JAMES S. WELLS
DLC NO. 40