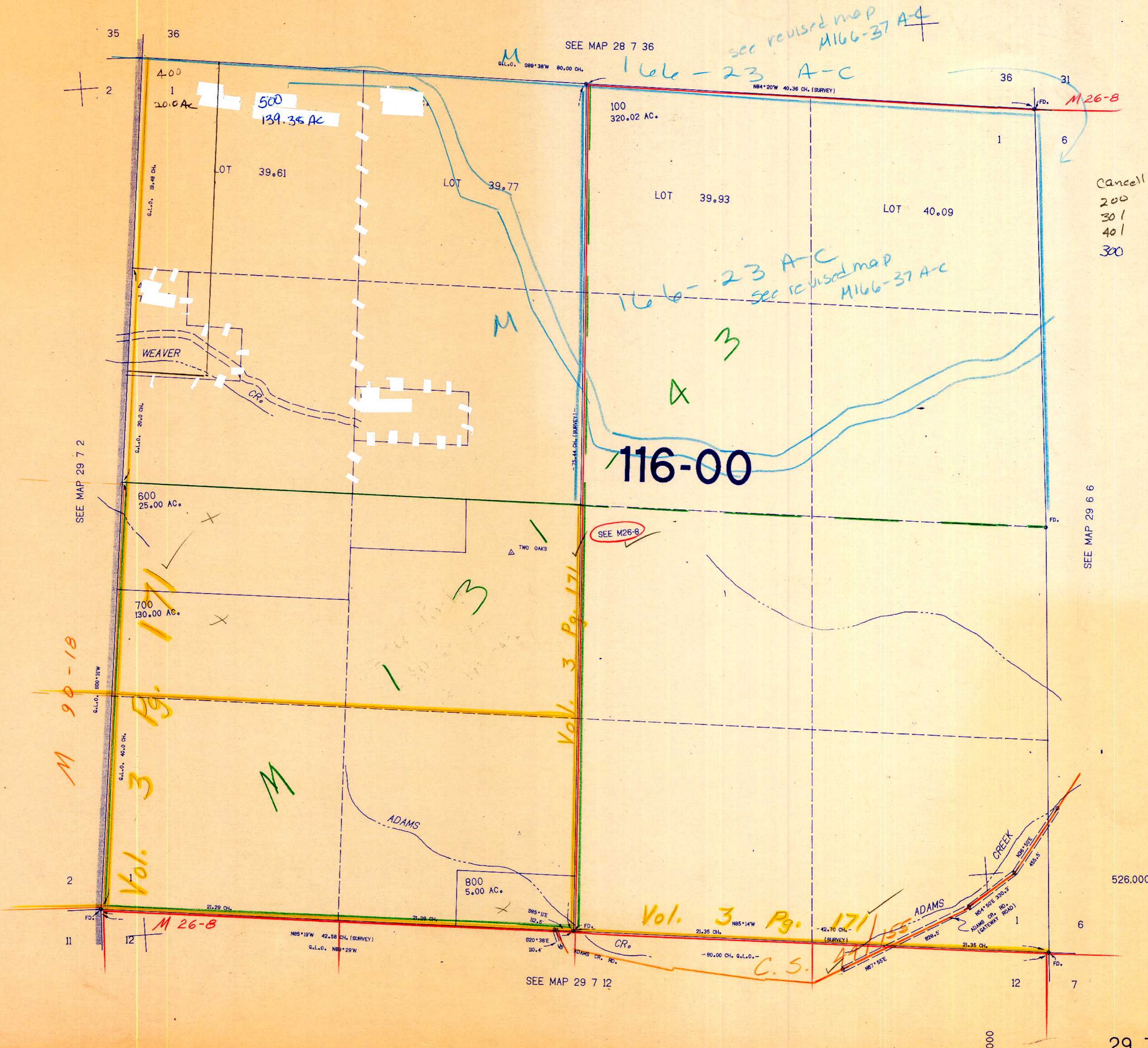


SECTION 1 T.29S. R.7W. W.M.
DOUGLAS COUNTY

THIS MAP WAS PREPARED FOR
ASSESSMENT PURPOSE ONLY.

1"=400'



Cancelled #s
200
301
401
300

SEE M26-8

SEE MAP 29 7 2

SEE MAP 29 6 6

SEE MAP 29 7 12

526.000

1:208,000

1/85/88