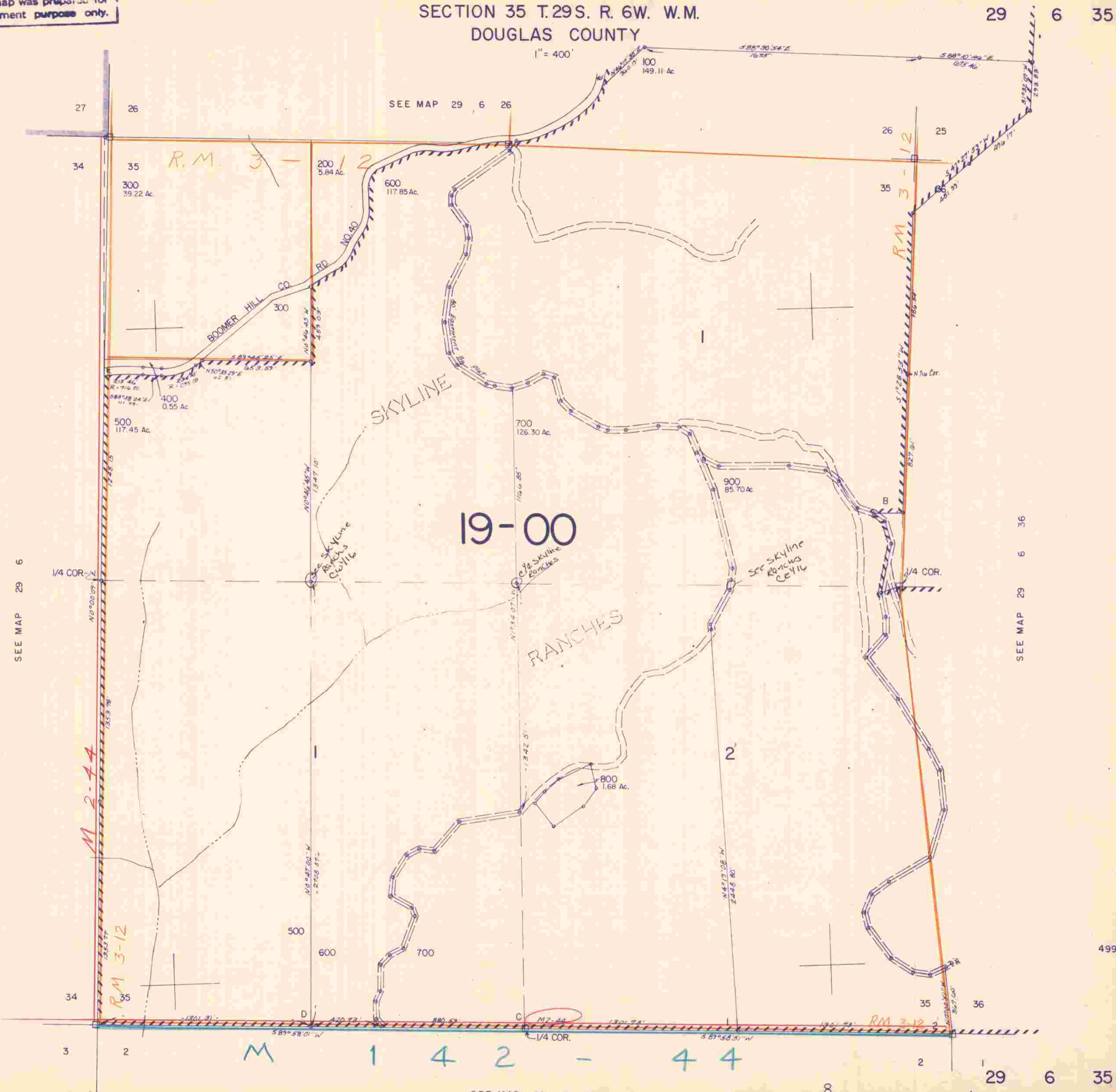


This map was prepared for assessment purpose only.

SECTION 35 T.29S. R. 6W. W.M.
DOUGLAS COUNTY

29 6 35

1" = 400'



SEE MAP 29 6 26

SEE MAP 29 6

SEE MAP 29 6 36

19-00

RANCHES

M 2-44

R.M. 3-12

R.M. 3-12

M 1 4 2 - 4 4

SEE MAP 30 6 2

1,233,000

12/84 BS

29 6 35