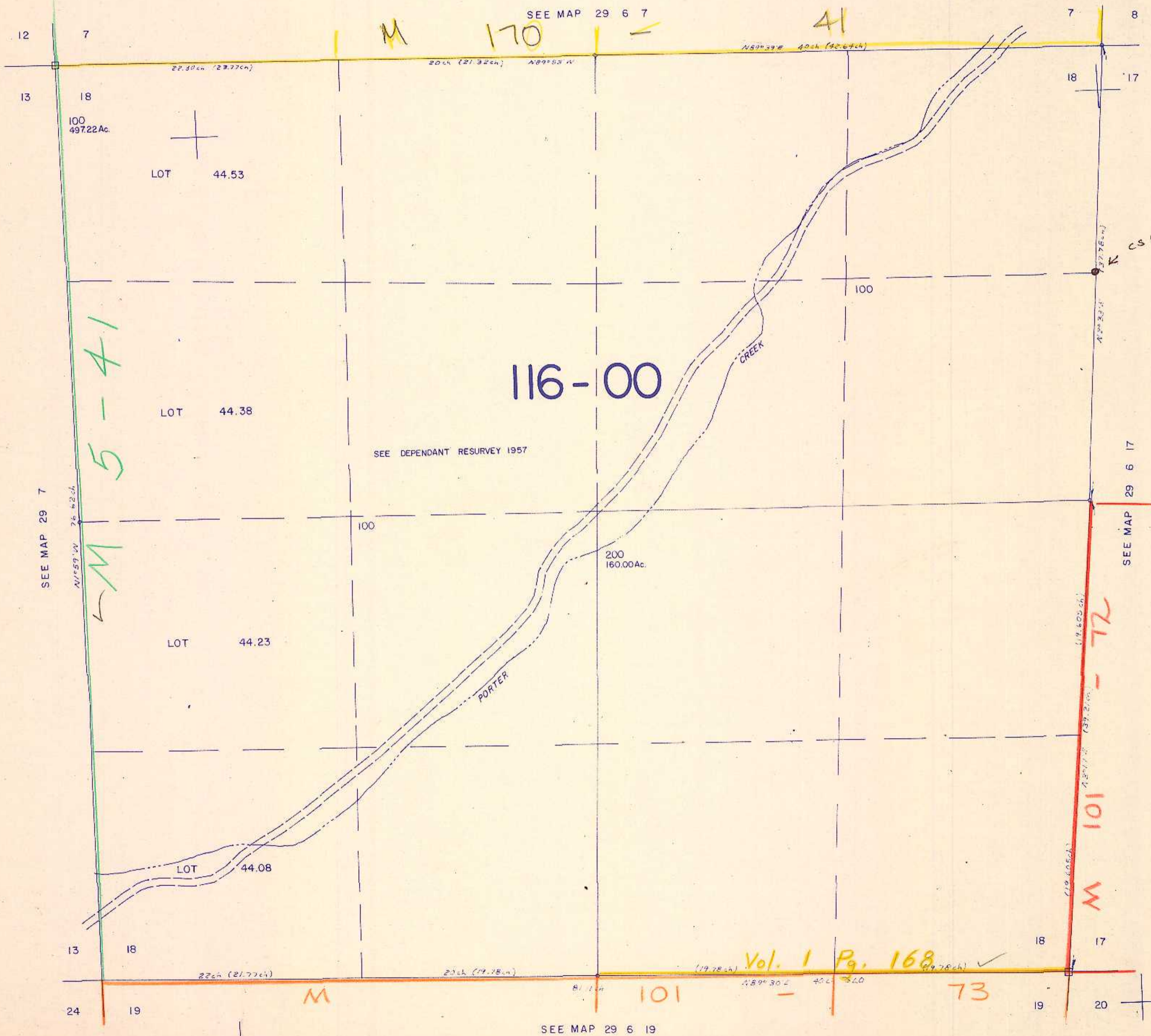


This map was prepared for assessment purposes only.

SECTION 18 T.29S. R.6W. W.M.  
DOUGLAS COUNTY

29 6 18

1" = 400'



CS 65/76-4

5-41  
M

Vol. 1 Pg. 168 ✓

M 101 - 72

515,000

12/84  
BS

1,214,000

29 6 18