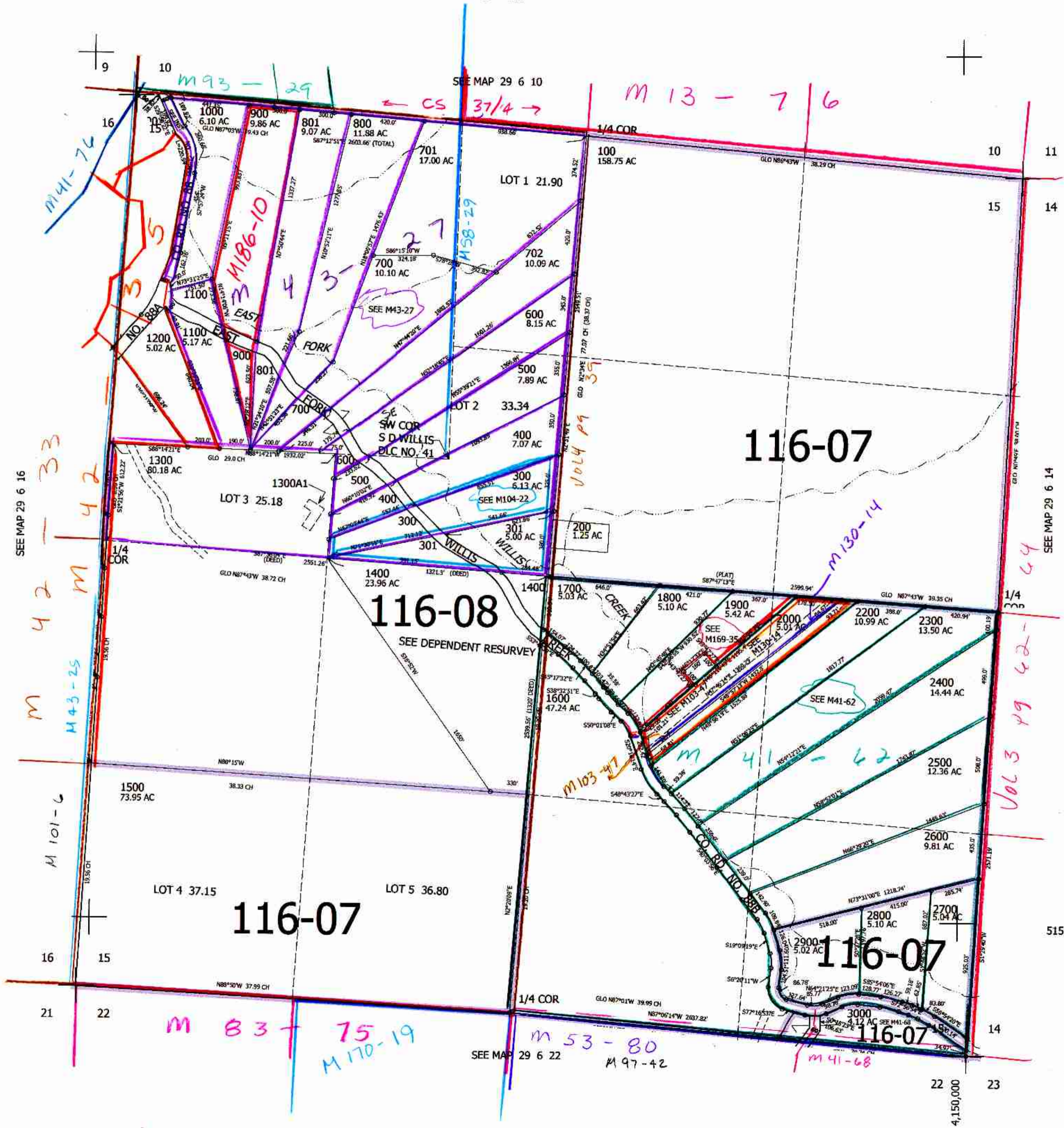


THIS MAP WAS PREPARED FOR ASSESSMENT PURPOSE ONLY.

SEC.15 T.29S. R.6W. W.M.
DOUGLAS COUNTY
1" = 400'

REVISED ON
6-24-15

29 6 15



CANCELLED NO'S
2100 1901

Vol 3 pg 42-44

515,000

am 7/30/15
JCV
29 6 15