

SECTION 13 T.29S. R. 6 W. W.M.
DOUGLAS COUNTY

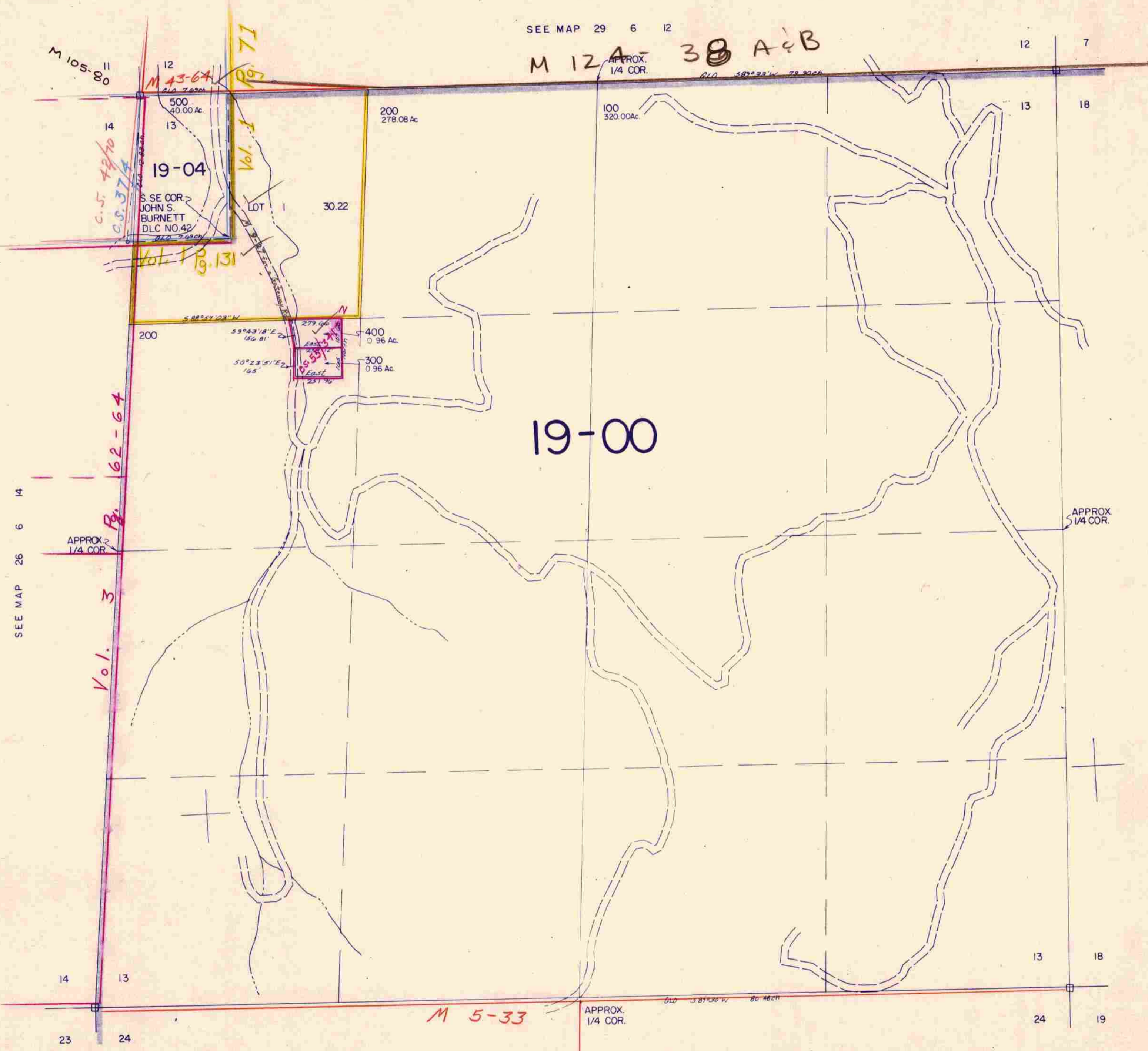
29 6 13

This map was prepared for
assessment purpose only.

1" = 400'

SEE MAP 29 6 12

M 12A-38 A & B



SEE MAP 26 6 14

SEE MAP 29 5 18

515,000

SEE MAP 29 6 24

29 6 13

1,240,000
12/84 BS