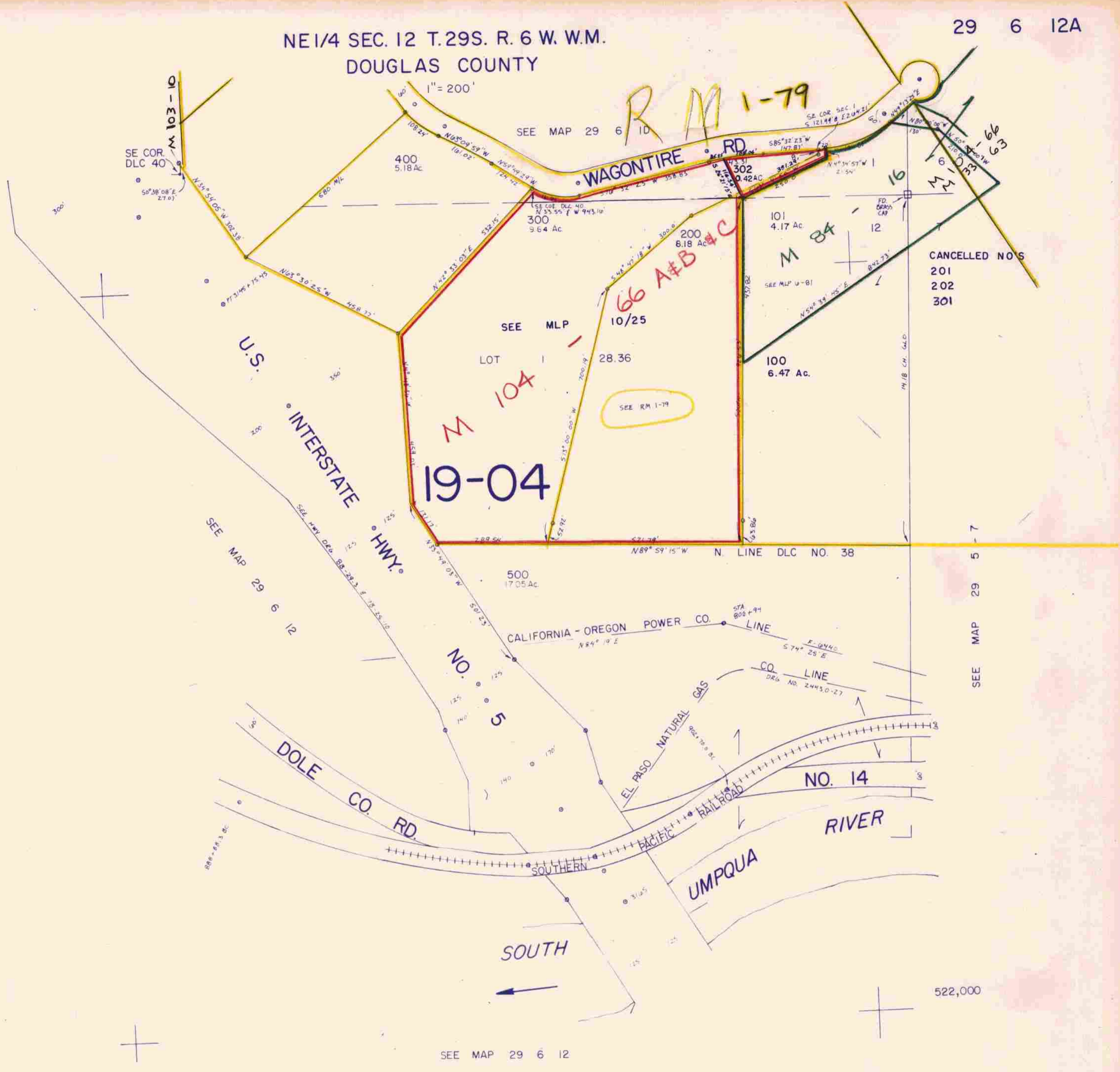
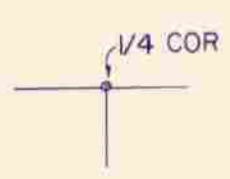


NE 1/4 SEC. 12 T. 29S. R. 6 W. W.M.  
DOUGLAS COUNTY

This map was prepared for  
assessment purpose only

*RM 1-79*



CANCELLED NOS  
201  
202  
301

**19-04**

**66 A+B+C**

SEE MLP  
10/25

LOT  
104

500  
17.05 AC

NO. 5

NO. 14

SOUTH

SEE MAP 29 6 12

522,000

APPROX.  
CEN. SEC.

1/4 COR.

1,240,000