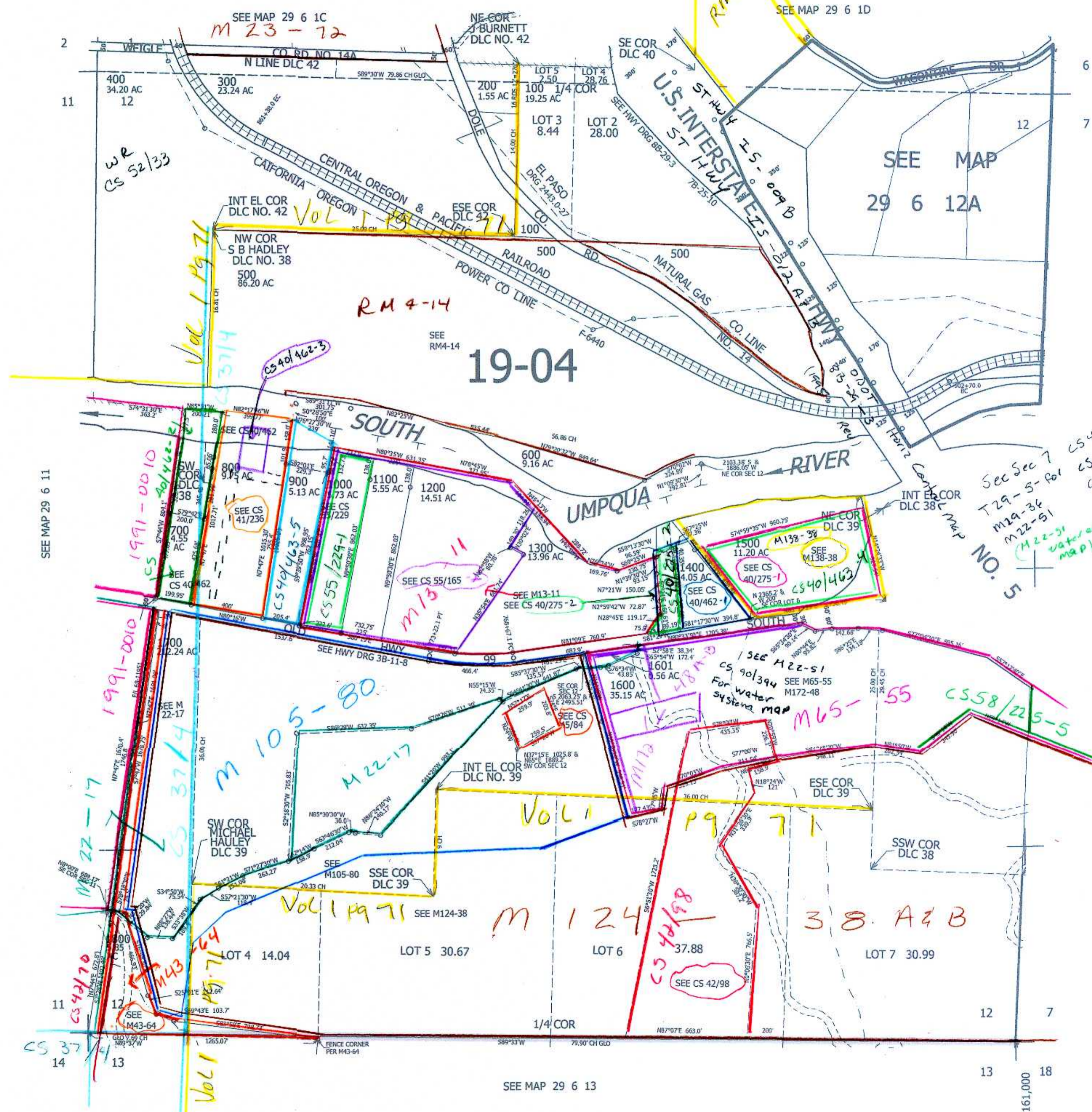


THIS MAP WAS PREPARED FOR ASSESSMENT PURPOSE ONLY.

SEC.12 T.29S. R.6W. W.M. DOUGLAS COUNTY

REVISED ON 9-27-17

1" = 400'



CANCELLED NO'S 1701

See Sec 7  
 T29-5-For  
 M19-34  
 M22-51  
 (M 22-51  
 water assessment  
 map)  
 SEE MAP 29 6 12  
 CS 40/462-3  
 CS 41/238  
 CS 42/245  
 CS 41/50

See M 22-51  
 CS 90/394  
 For water  
 system map  
 SEE M65-55  
 M172-48

520,000

SEE MAP 29 6 13

4,161,000