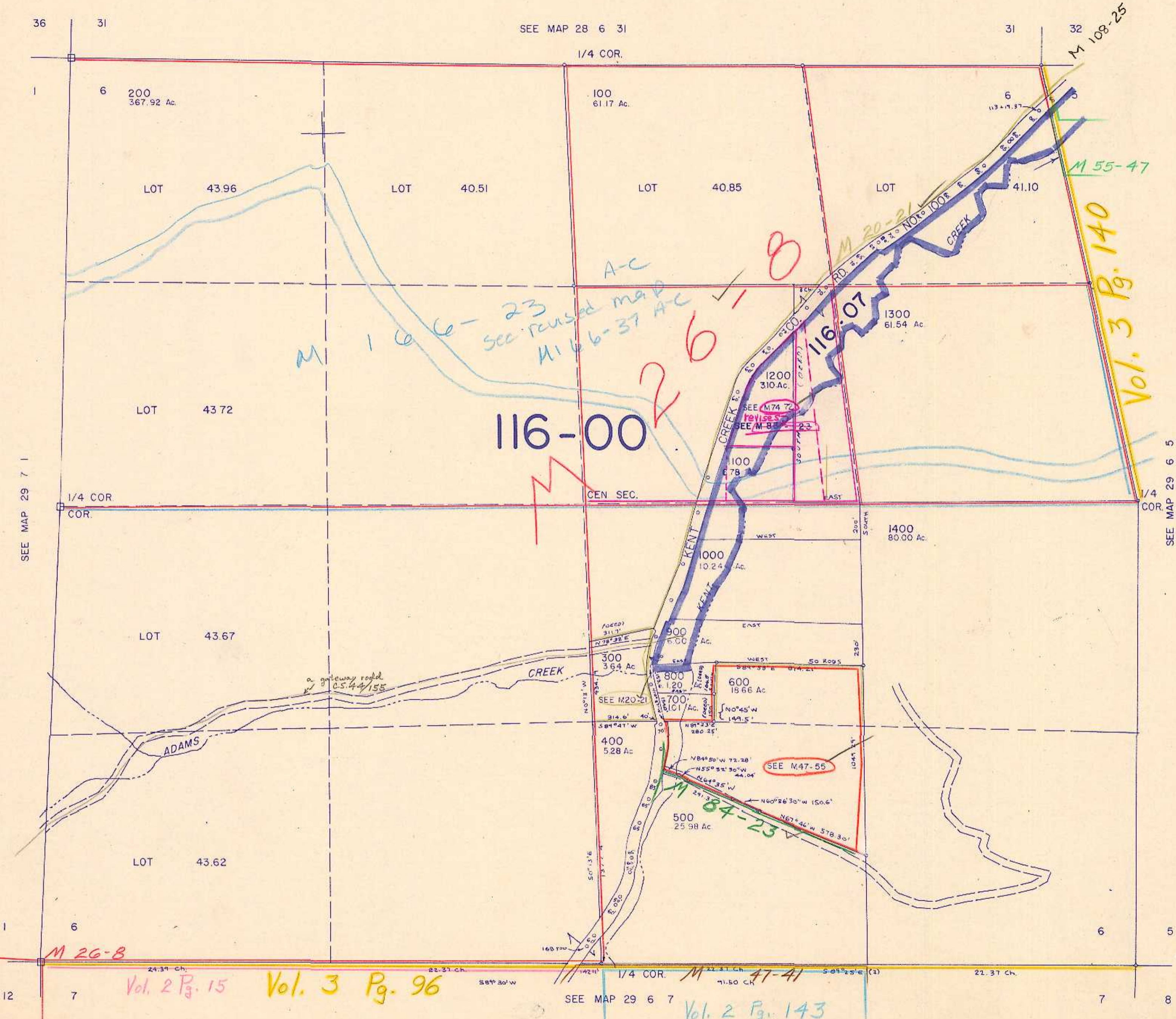


This map was prepared for assessment purpose only.

SECTION 6 T.29S. R.6W. W.M.  
DOUGLAS COUNTY

1" = 400'



SEE MAP 29 7 1

SEE MAP 29 6 5

M 26-8

Vol. 2 Pg. 15 Vol. 3 Pg. 96

Vol. 2 Pg. 143

11/04 BS