

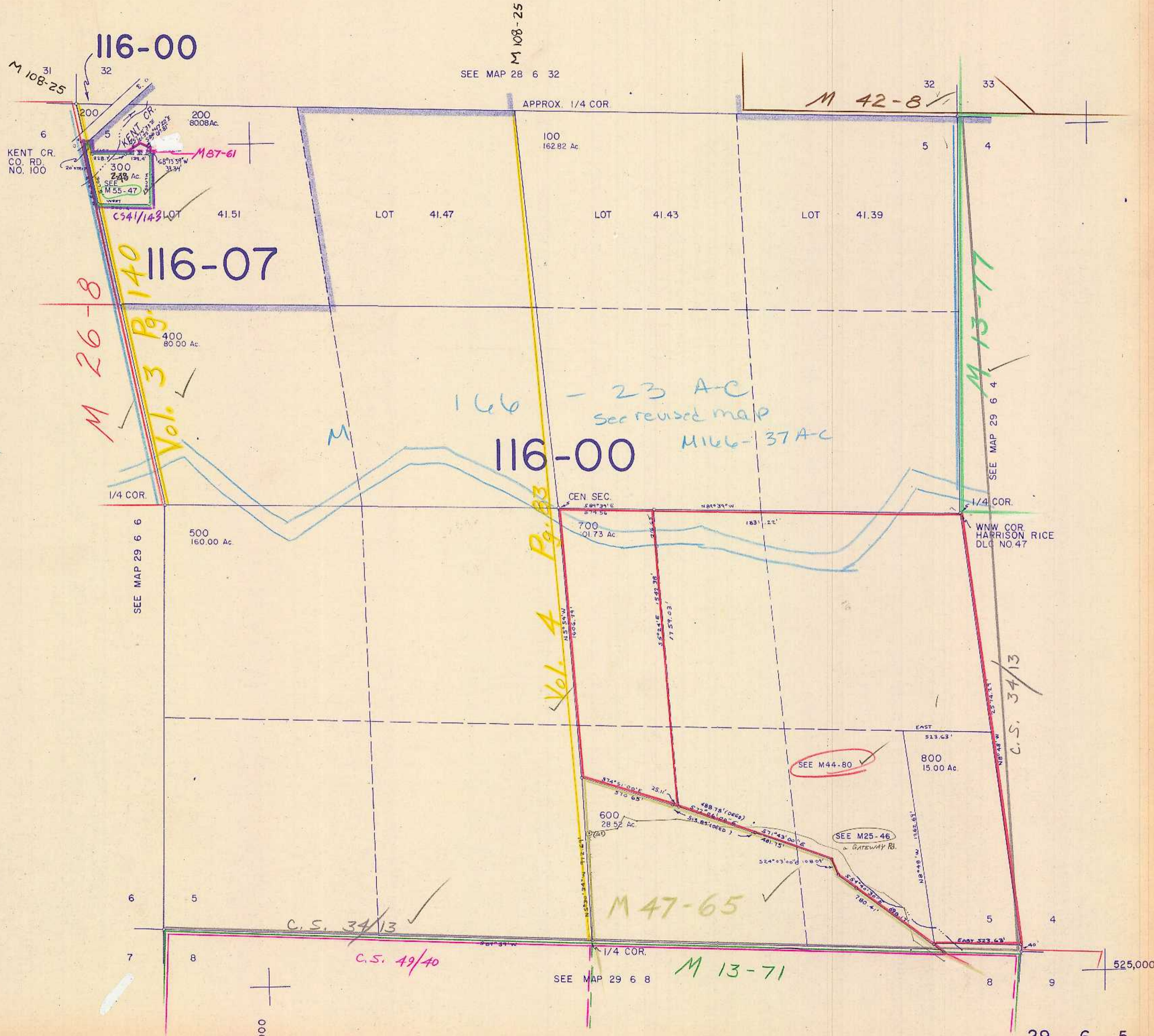
This map was prepared for assessment purpose only.

SECTION 5 T.29S. R.6W. W.M.

29 6 5

DOUGLAS COUNTY

1" = 400'



116-00

M 108-25

SEE MAP 28 6 32

M 42-8

M 108-25

KENT CR. CO. RD. NO. 100

116-07

M 26-8

Vol. 3 Pg. 140

166

- 23 AC See revised map

116-00

M 166-37 AC

M 13-77

SEE MAP 29 6 4

1/4 COR.

SEE MAP 29 6 6

CEN SEC.

700 01.73 Ac

1/4 COR.

WNW COR. HARRISON RICE DLO NO. 47

SEE M44-80

SEE M25-46

M 47-65

C.S. 34/13

C.S. 49/40

SEE MAP 29 6 8

M 13-71

C.S. 34/13

1,215,000

29 6 5

11/04 08