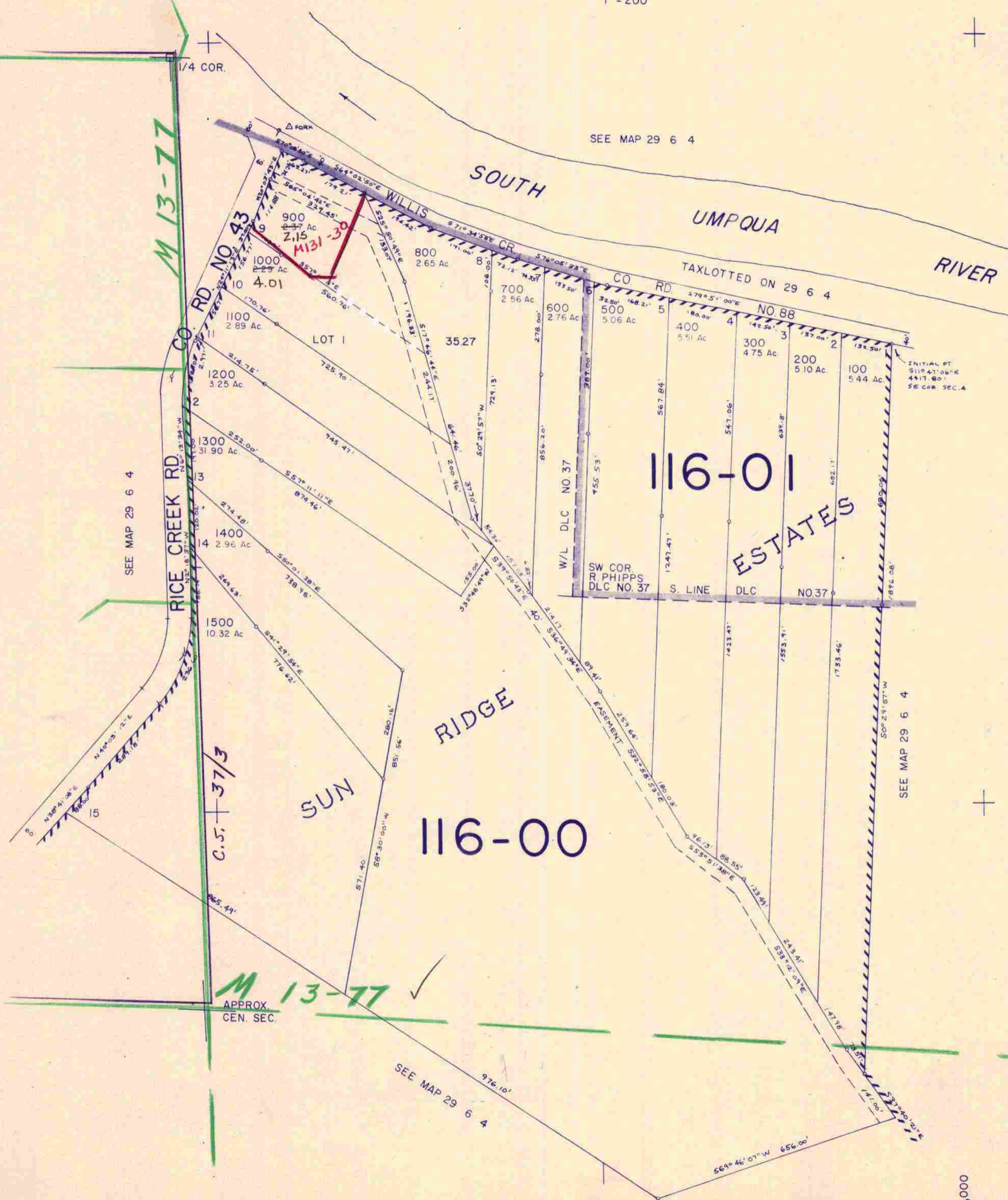
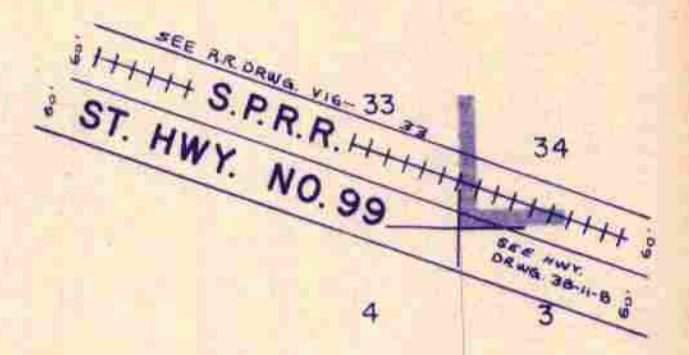


This map was prepared for assessment purpose only.

NE 1/4 SEC. 4 T.29S. R.6W. W.M.
DOUGLAS COUNTY

29 6 4A

1" = 200'



M 13-77

C.S. 37/3

M 13-77

APPROX. CEN. SEC.

116-01
ESTATES

116-00

care,
901
1001

528,000

1,224,000

29 6 4A
11/84 BS