

NE 1/4 NW 1/4 SEC. 3 T.29S. R.6W. W.M.  
DOUGLAS COUNTY

REVISED ON  
10-9-91

29 6 3BA

This map was prepared for  
assessment purpose only.

1" = 100'

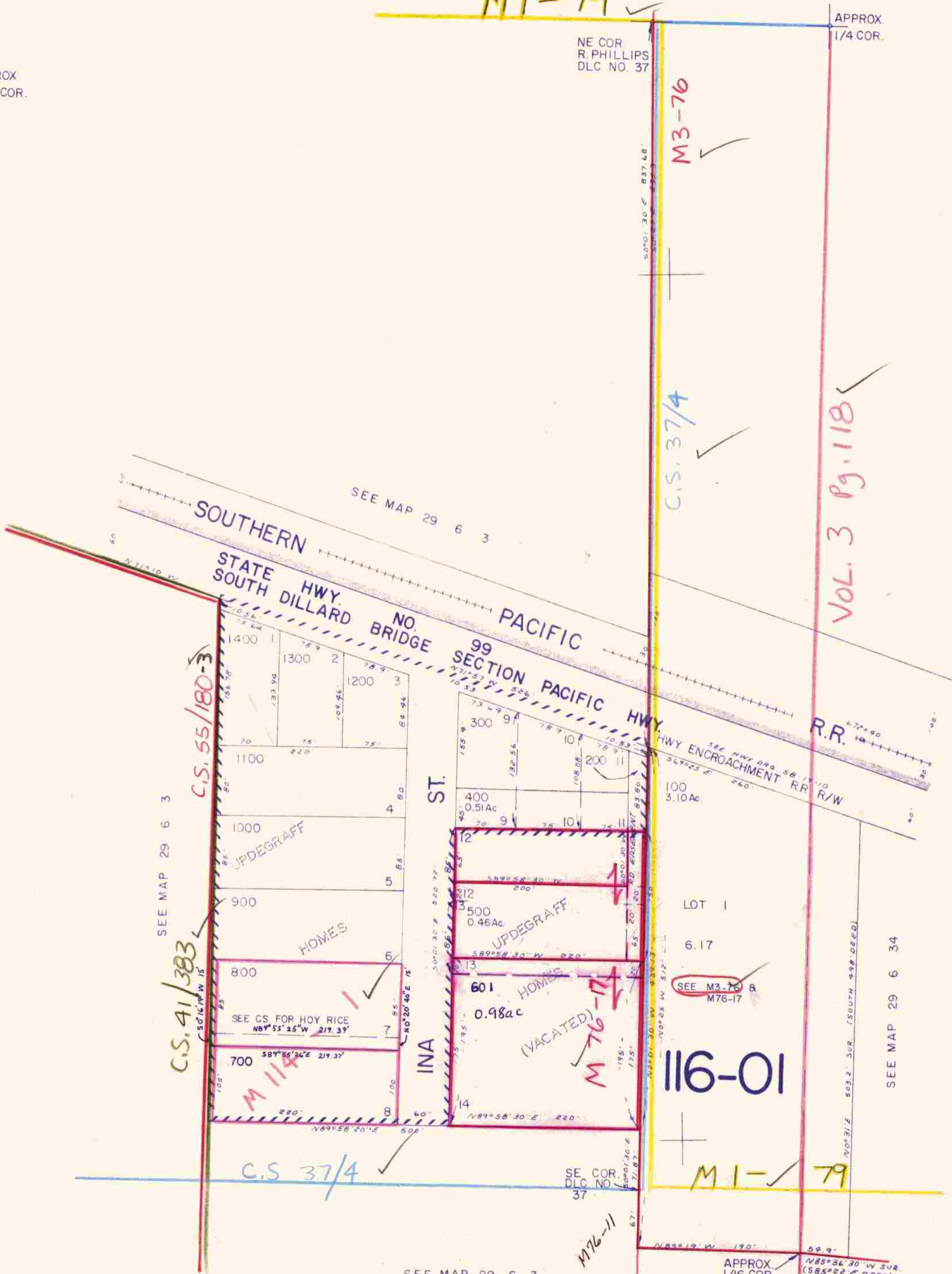
APPROX  
1/16 COR.

NE COR.  
R. PHILLIPS  
DLC NO. 37

APPROX  
1/4 COR.

CANCELLED NO'S  
701  
600

529,500



NE COR. LOT 3  
NW COR. LOT 2

SEE MAP 29 6 3

APPROX  
1/16 COR.

SEE MAP 29 6 34

29 6 3BA

1:227,000

10/9/91