

This map was prepared for assessment purpose only.

NW1/4 NW1/4 SEC. 2 T.29S. R. 6 W.W.M.
DOUGLAS COUNTY

29 6 2BB

1"=100'

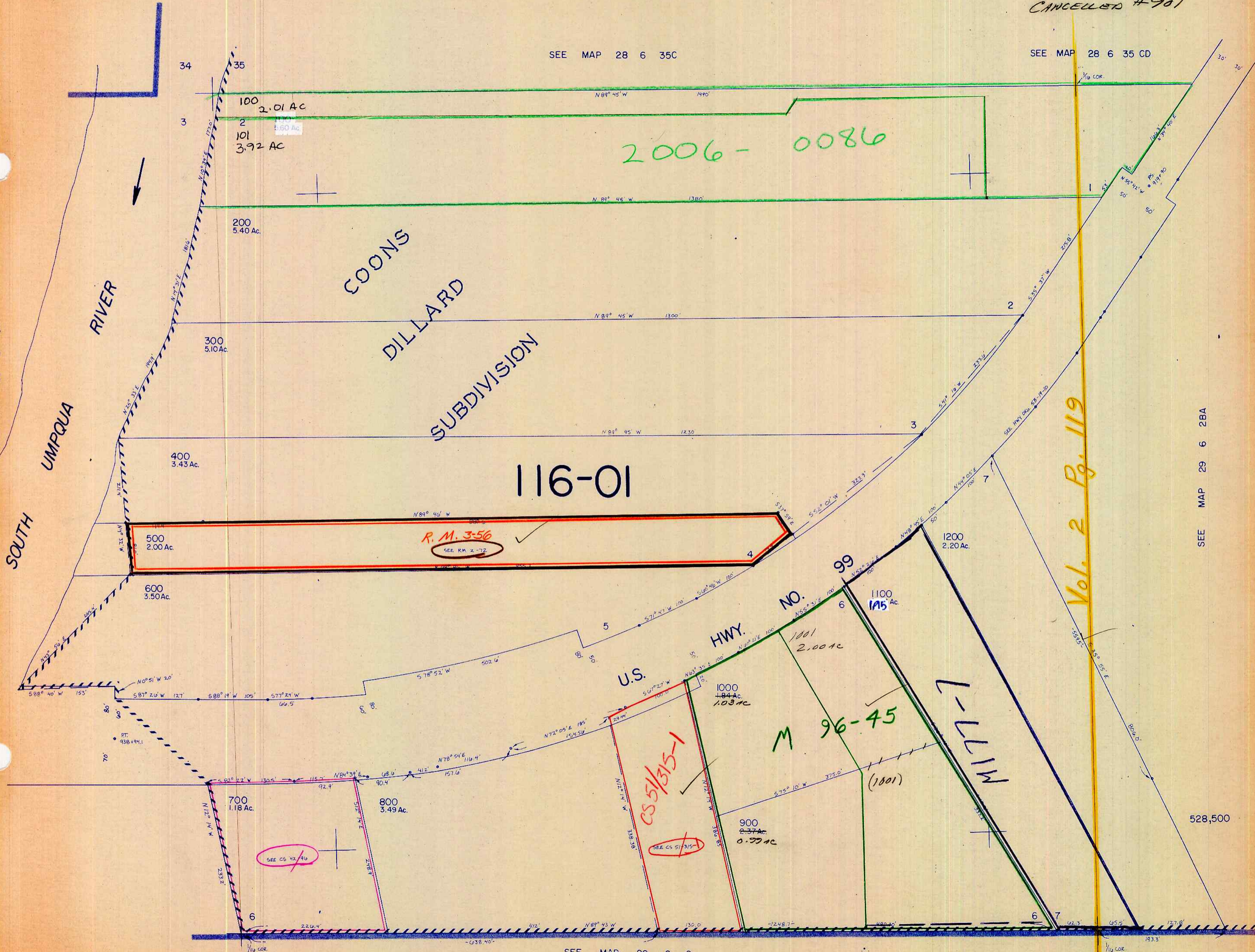
CANCELLED #901

SEE MAP 28 6 35C

SEE MAP 28 6 35 CD

SEE MAP 29 6 3A

SEE MAP 29 6 2BA



116-01

R.M. 3-56
SEE RM 2-72

M 96-45

Vol. 2 Pg. 119

SEE MAP 29 6 2

1,231,000

29 6 2BB

11/84 Bill