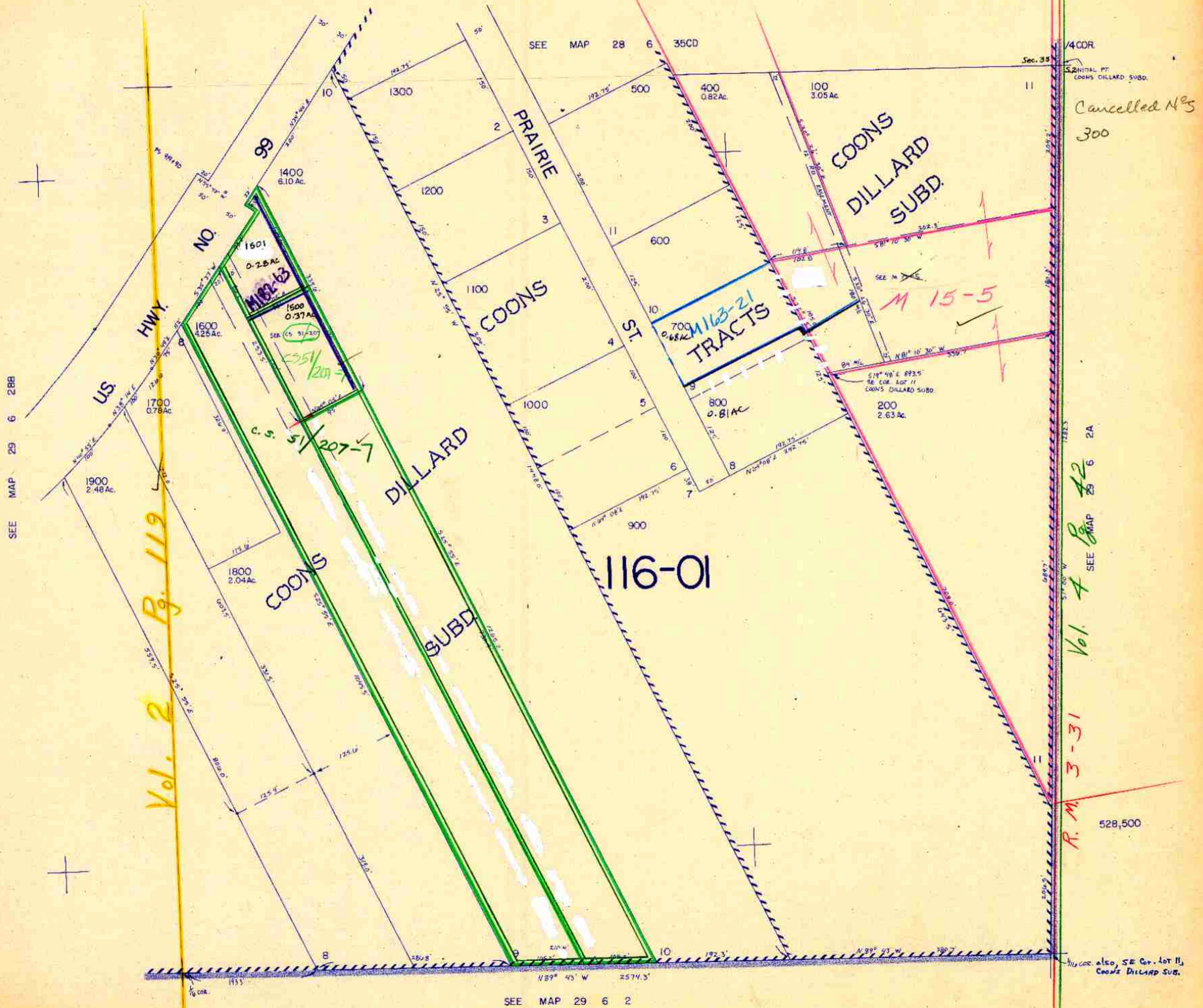


NE 1/4 NW 1/4 SEC. 2 T.29S. R. 6 W.W.M.  
DOUGLAS COUNTY

29 6 2BA

This map was prepared for  
assessment purpose only.

1"=100'



SEE MAP 29 6 288

SEE MAP 29 6 288

SEE MAP 29 6 288

Vol. 2 Pg. 119

Cancelled Nos  
300

R.M. 3-31  
Vol. 4 Pg. 42  
SEE MAP 29 6 2A

528,500

1/2 cor. also, SE Cor. Lot 11,  
COONS DILLARD SUBD.

SEE MAP 29 6 2

1,232,000

29 6 2BA

11/04 BS