

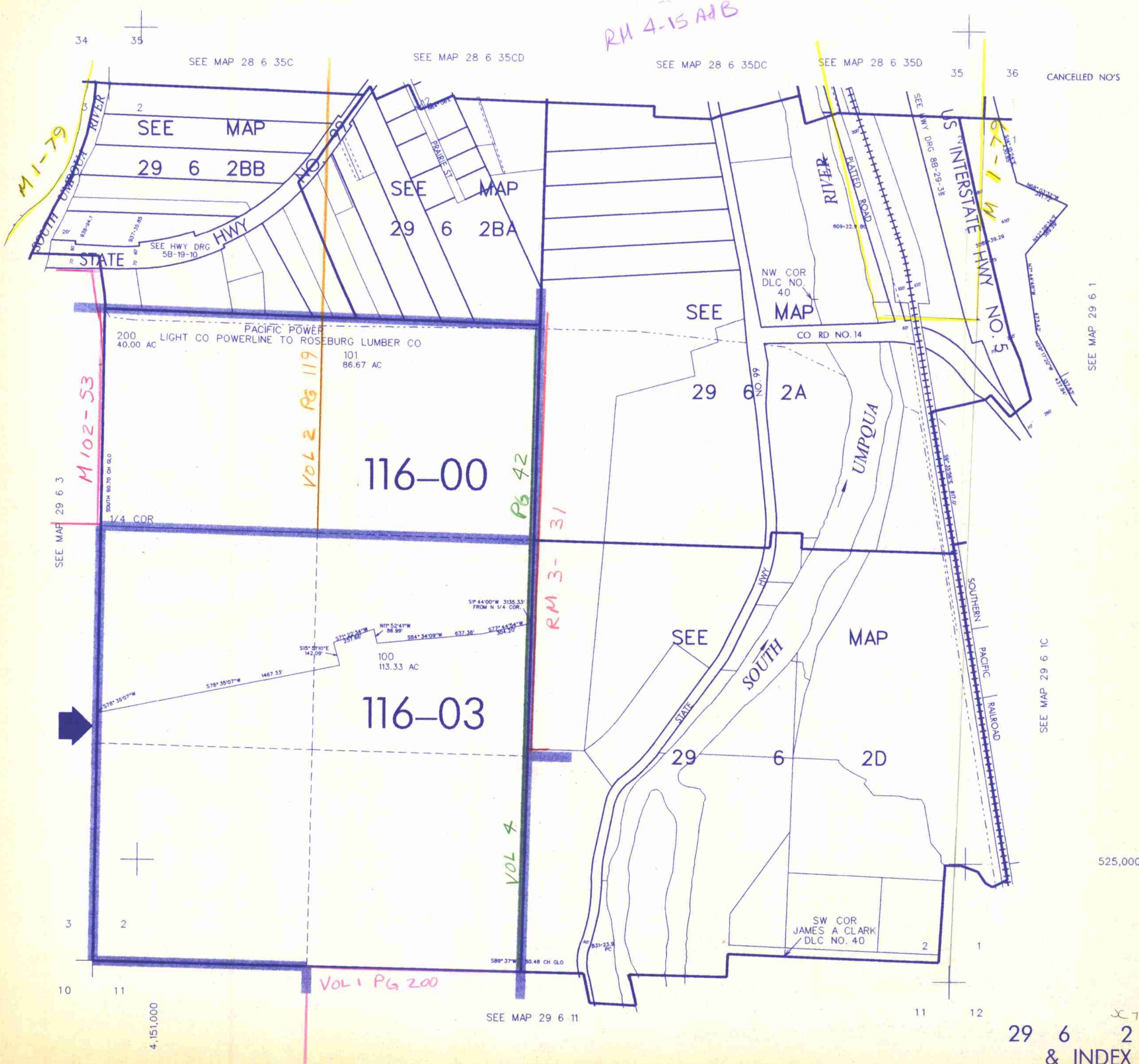
THIS MAP WAS PREPARED FOR
ASSESSMENT PURPOSE ONLY

SEC. 2 T.29S. R. 6W W.M.
DOUGLAS COUNTY

1"=400'

REVISED ON
5-14-98

29 6 2
& INDEX



34 35

SEE MAP 28 6 35C

SEE MAP 28 6 35CD

SEE MAP 28 6 35DC

SEE MAP 28 6 35D

35

36

CANCELLED NO'S

SEE MAP
29 6 2BB

SEE MAP
29 6 2BA

SEE
MAP

200 LIGHT CO POWERLINE TO ROSEBURG LUMBER CO
40.00 AC

101
86.67 AC

CO RD NO. 14

116-00

29 6 2A

SEE MAP 29 6 3

M102-53

VOL 2 PG 119

PG 42

RM 3-31



116-03

100
113.33 AC

SEE
MAP

SEE MAP 29 6 1C

29 6 2D

3

2

10

11

4,151,000

VOL 1 PG 200

SEE MAP 29 6 11

11

12

525,000

29 6 2
& INDEX

2/7/98
P