

SE 1/4 SEC. 1 T.29S. R. 6 W. W.M.
DOUGLAS COUNTY

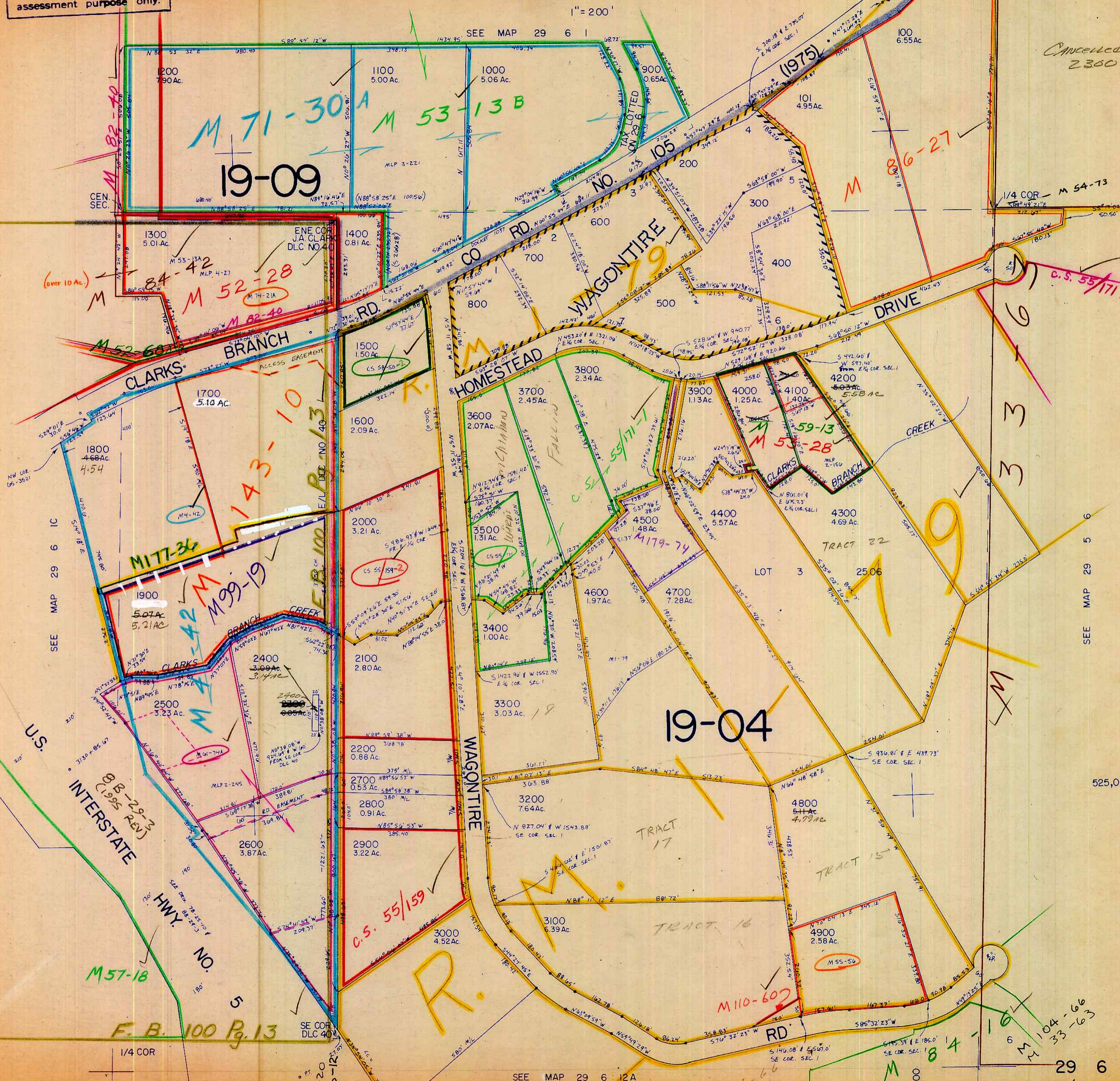
29 6 1D

This map was prepared for
assessment purpose only.

1" = 200'

SEE MAP 29 6 1

Cancelled No's
2300



SEE MAP 29 6 1C

SEE MAP 29 6 1D

U.S. INTERSTATE
8 B-28-3
(1.95 REV)

HWY. NO. 5

F. B. 100 Pg. 13

SEE MAP 29 6 12A

29 6 1D

11/04 88