

THIS MAP WAS PREPARED FOR ASSESSMENT PURPOSE ONLY.

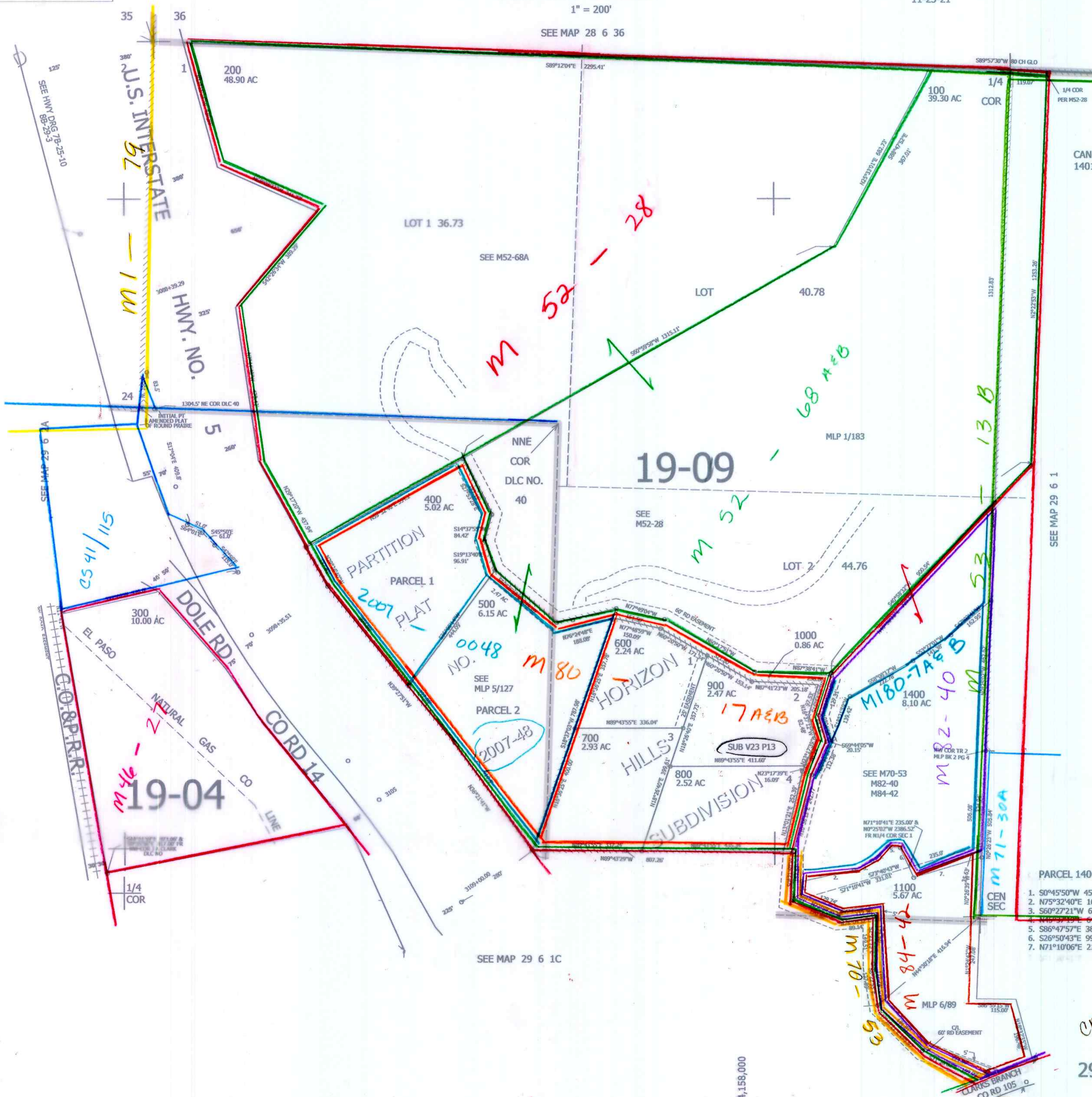
NW1/4 SEC.1 T.29S. R.6W. W.M.
DOUGLAS COUNTY

REVISED ON
11-23-21

29 6 1B

1" = 200'

SEE MAP 28 6 36



CANCELLED NO'S
1401 1200 1300

- PARCEL 1400
1. S0°45'50"W 45.35'
 2. N75°32'40"E 164.03'
 3. S60°27'21"W 63.06'
 4. N70°32'40"E 164.03'
 5. S86°47'57"E 38.65'
 6. S26°50'43"E 99.66'
 7. N71°10'06"E 218.75'

cm
5/12/08
JC

29 6 1B