

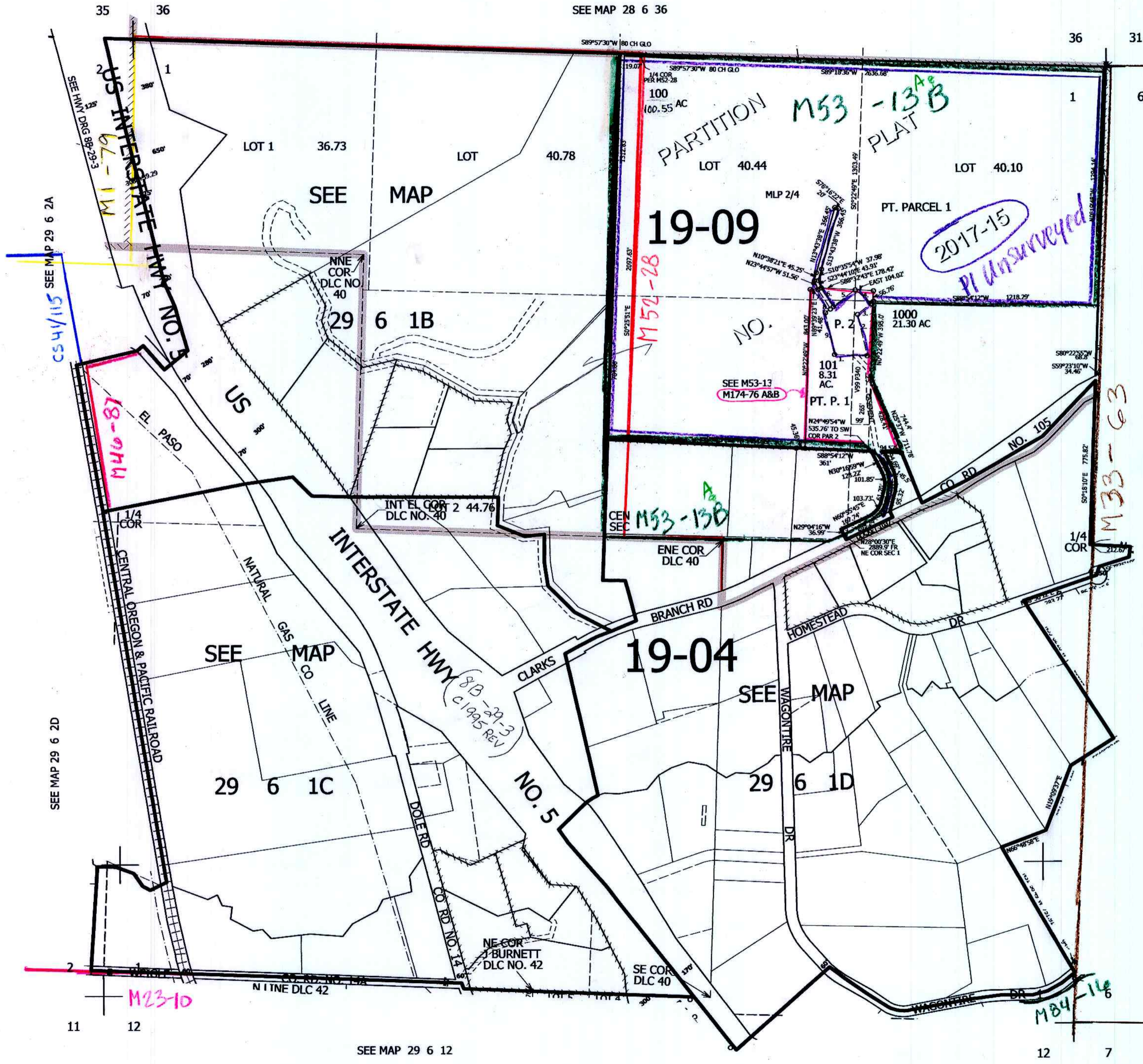
THIS MAP WAS PREPARED FOR ASSESSMENT PURPOSE ONLY.

SEC.1 T.29S. R.6W. W.M. DOUGLAS COUNTY

1" = 400'

REVISED ON 12-6-18

29 6 1 & INDEX



CANCELLED NO'S
 1100 1100M1 200
 300 400 500 501
 502 600 700 800
 900 901 102

PARCEL 101
 PP 2017-15
 1. N89°52'40"E 177.39'
 2. N15°33'46"W 231.23'
 3. N49°41'10"E 96.18'
 4. S2°36'44"W 115.65'
 5. S49°41'10"W 150.15'
 6. N32°08'13"W 120.07'
 7. S32°08'13"E 124.41'
 8. S49°41'10"W 33.34'
 9. S14°52'31"E 230.89'

SEE MAP 29 5 6

525,000

29 6 1 & INDEX

SEE MAP 29 6 2A

SEE MAP 29 6 2D

SEE MAP

SEE MAP

SEE MAP 29 6 12

SEE MAP 29 6 12A

18-6-18
Jc