

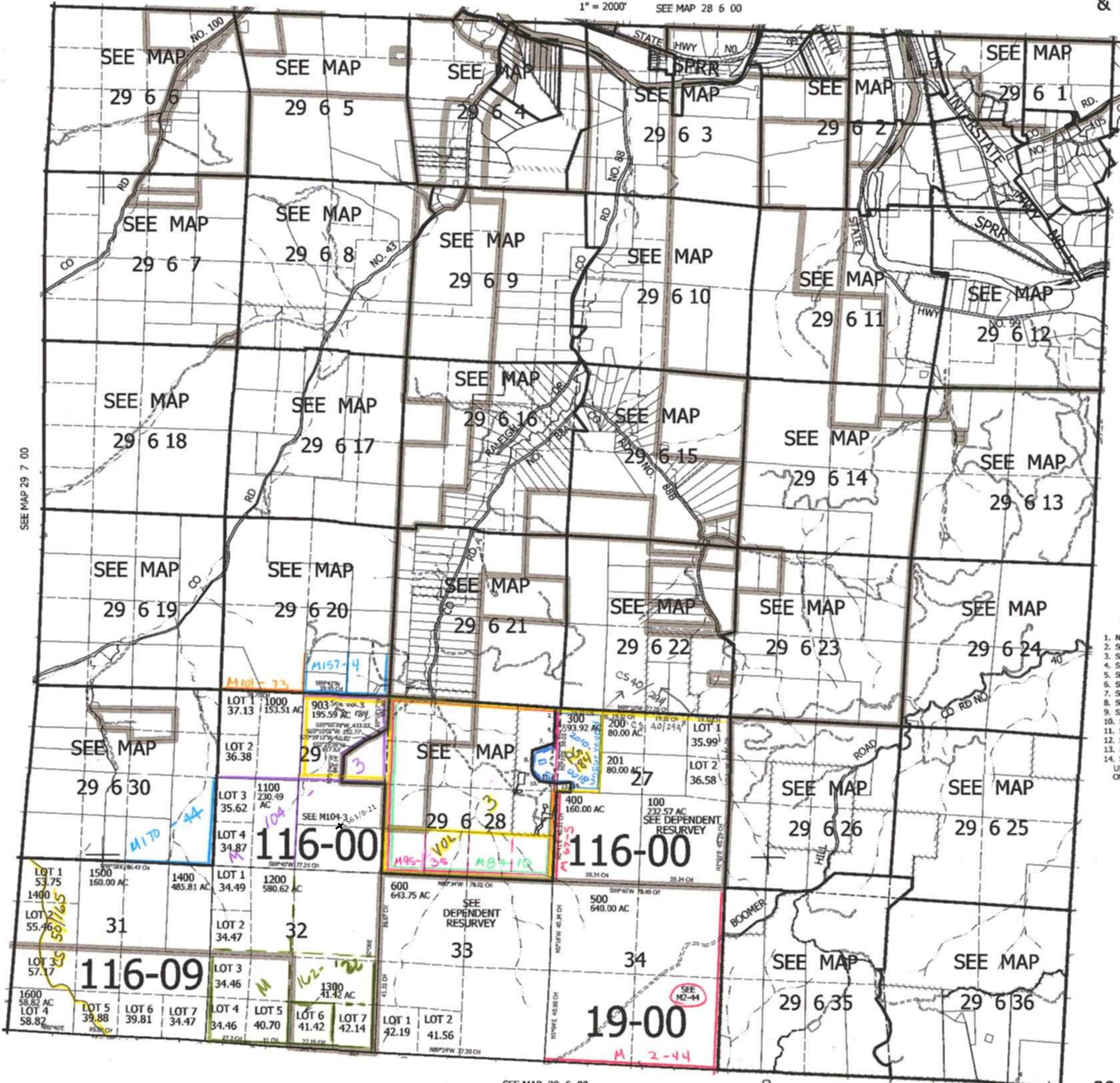
THIS MAP WAS PREPARED FOR ASSESSMENT PURPOSE ONLY.

T.29S. R.6W. W.M.
DOUGLAS COUNTY

REVISED ON
10-27-09

29 6 00
& INDEX

1" = 2000' SEE MAP 28 6 00



CANCELLED NO'S
902 905 906
301 400M1 700M1
1300M1 700 800
900 901 904

TAXLOT 300

1. N88°00'55"W 160.79'
2. S0°18'40"W 628.59'
3. S8°28'57"W 80.67'
4. S5°50'41"E 182.96'
5. S0°08'E 176.81'
6. S89°52'W 35'
7. S69°45'12"W 658.25'
8. SOUTH 590.5'
9. S30°E 200'
10. S44°44'21"E 241.02'
11. S85°01'12"E 458.09'
12. S87°07'54"E 30.7'
13. N84°40'55"E 456.27'
14. SOUTH 286.38' M/L UNRECORDED SURVEY ON FILE

505,000

1109
NW

29 6 00
& INDEX

SEE MAP 30 6 00

4,151,000