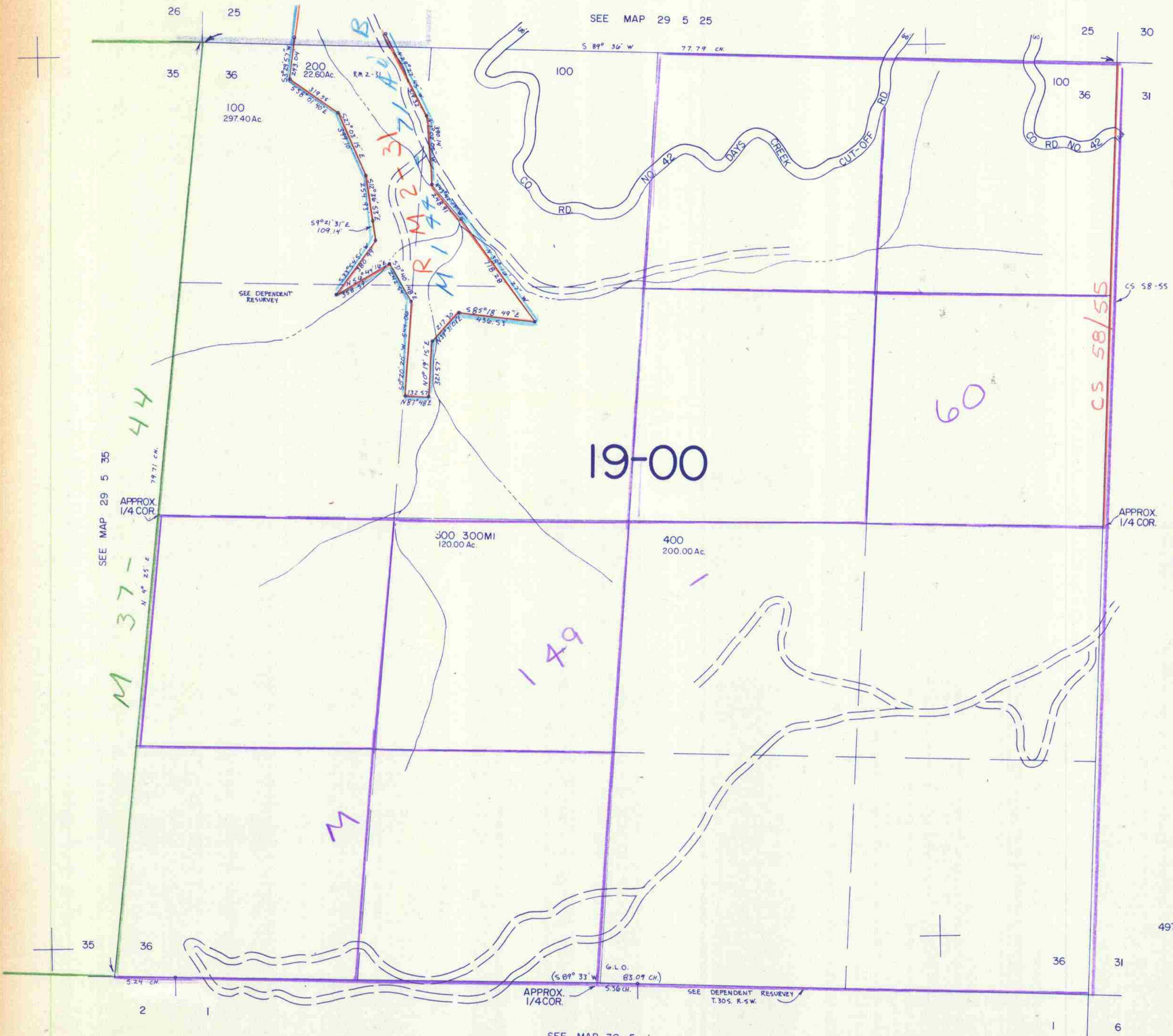


SECTION 36 T.29 S. R. 5 W. W.M.  
DOUGLAS COUNTY

29 5 36

1" = 400'



SEE MAP 29 5 35

APPROX. 1/4 COR.

M 37-44

19-00

60

149

CS 58/55

SEE MAP 29 4 31

APPROX. 1/4 COR.

APPROX. 1/4 COR.

SEE MAP 30 5 1

SEE DEPENDENT RESURVEY T.30S. R.5W.

1,270,000

29 5 36

JC 11/99 JP