

SECTION 35 T.29S. R.5W. W.M.
DOUGLAS COUNTY

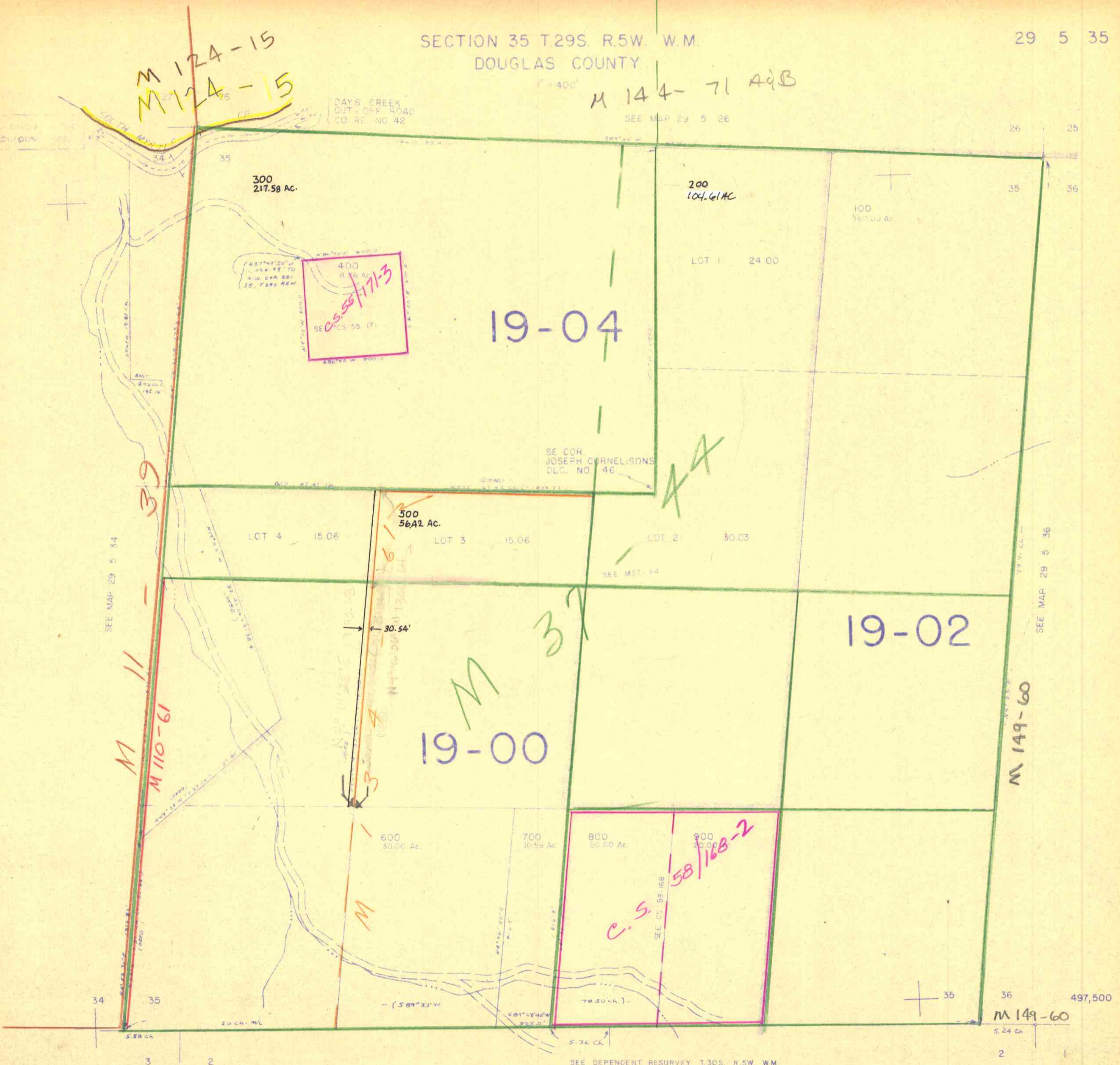
29 5 35

M 144-71 A+B

M 124-15
M 124-15

DAYS CREEK
OUT-OF-ROAD
CO. RD. NO. 42

SEE MAP 29 5 26



19-04

19-02

19-00

C.S. 58-168-2

SEE DEPENDENT RESURVEY T.30S. R.5W. W.M.
SEE MAP 30 5 2

1:265,000

29 5 35

1/32